



## Your sustainable oasis awaits

Your home should be your sanctuary. It's a safe haven where you can relax, connect with family and escape the demands of the outside world. A place where your impact on the planet is minimised simply by going about daily living. Introducing our new EcoSanctuary range where flexible modular home design meets affordable eco-friendly living.

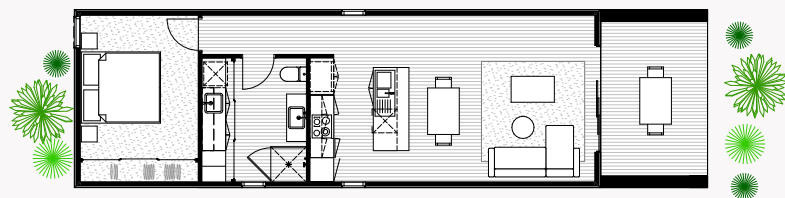
Comprising of 8 designs suited to typical urban sites, the EcoSanctuary range offers thoughtful family-friendly layouts and features. Designs include a beautiful open plan central living module for creating memories together, flexible workspace options and serene sleeping zones, allowing every member of your household to live, work and rest with ease.

Like all Ecoliv homes, sustainability is ingrained in the design, construction and operation of each EcoSanctuary home. Live in style and comfort with Tasmanian oak engineered flooring, 100 percent wool carpets plus sustainable features like a 2.2kw grid connected solar power system and 10,000 litre water tank included as standard.

# EcoSanctuary range

Introducing our new EcoSanctuary range where flexible modular home design meets affordable eco-friendly living. An airy open plan central living module, flexible workspace options and serene sleeping zones, allowing every member of your household to live, work and rest in comfort and ease.

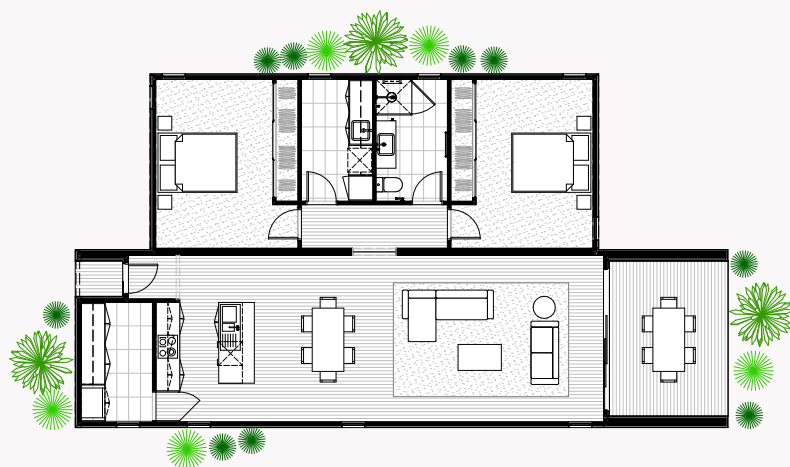
1A



### EcoSanctuary<sup>1A</sup>

Modules	1
Area	60m <sup>2</sup>
Deck	11.65m <sup>2</sup>
Length	16m
Width	4.5m
Height	3.8m
Price	\$288,000 + GST

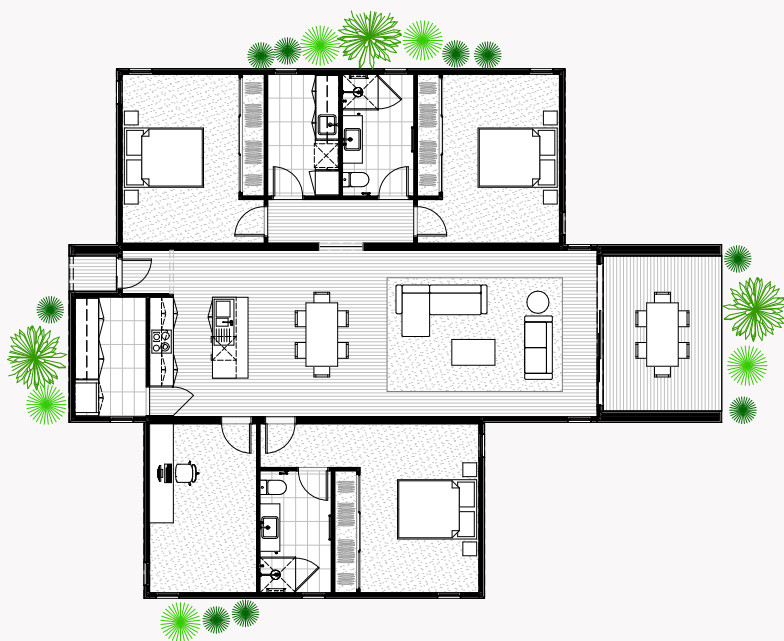
2A



### EcoSanctuary<sup>2A</sup>

Modules	2
Area	111.82m <sup>2</sup>
Deck	12.83m <sup>2</sup>
Length	16.50m
Width	8.945m
Height	3.8m
Price	\$493,000 + GST

3A

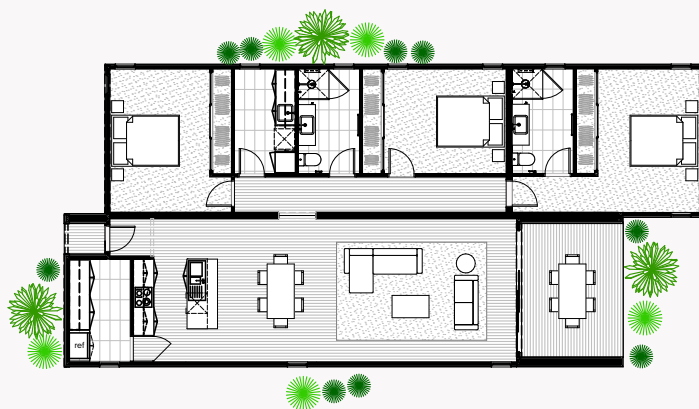


### EcoSanctuary<sup>3A</sup>

Modules	3
Area	150.09m <sup>2</sup>
Deck	12.83m <sup>2</sup>
Length	16.50m
Width	13.39m
Height	3.8m
Price	\$598,000 + GST



3B



### EcoSanctuary<sup>3B</sup>

Modules	3
Area	139.38m <sup>2</sup>
Deck	12.83m <sup>2</sup>
Length	18.9m
Width	8.89m
Height	3.8m
Price	\$569,000 + GST



4A



### EcoSanctuary<sup>4A</sup>

Modules	4
Area	184.13m <sup>2</sup>
Deck	12.83m <sup>2</sup>
Length	20.34m
Width	13.335m
Height	3.8m
Price	\$672,000 + GST

# Standard inclusions

ECOLIV®

## EcoSanctuary range

### ENERGY EFFICIENCY / SUSTAINABILITY

- 7 Star energy rating (via site specific passive solar design recommendations)
- 2.22 KW grid connect solar power system\*
- 10,000 litre poly water tank connected to washing machine and toilet\*
- 270 litre heat pump hot water system
- Sealing with a vapour permeable membrane
- Zero carbon footprint cladding
- Double glazed argon filled aluminium windows and sliding doors
- Low VOC paints and sealers
- Low VOC custom cabinetry
- WELS rated plumbing fixtures
- LED downlights
- Bulk insulation - R1.5 Aircell roof blanket, ceiling R6 batts, walls R2.5, floor R6. (subfloor sealed)

### SITE & FOUNDATIONS

- Footings (to class 'M' soil classification)
- 600mm diameter bored pier concrete pad with galvanised steel stumps to 400mm high
- Connection of services available from perimeter of building
- NCC termite treatment

### EXTERIOR

- NCC compliant structure (local, state and national compliance)
- Plantation pine frames and trusses
- TrimDeck profile colorbond colour roofing and accessories
- Zero carbon footprint Weathertex cladding
- Australian made Haymes Low VOC paint finish to all external surfaces (one colour)
- AWS powder coated aluminium double-glazed windows and sliding door units
- Fly screens to all openable windows and sliding doors
- 820 solidcore entry door with feature handle
- One garden tap connected to water tank

- BAL (Bushfire Attack Level) 12.5 construction
- Australian hardwood decking + external steps as detailed in floorplan
- Wind rating to N2

### INTERIOR

- 3100mm max ceiling height to the living module
- 2550mm ceiling height to all other rooms
- 10mm plasterboard to walls and ceilings
- Insulation to external walls, floors and ceilings
- Eazypine 67mm square set skirting and architraves
- Villaboard (water resistant) to bathroom
- Redicote 2100mm hinged internal doors with brushed chrome lever door furniture
- Cushion door stops to all doors opening on to walls
- 2500mm built-in robes with shelving and hanging rails
- Wool carpet to bedrooms
- Tasmanian Oak 14.3mm engineered timber flooring with low VOC scratch resistant finish
- Australian made Haymes low VOC paint finish to all internal surfaces (one colour)

### KITCHEN

- 20mm recycled glass benchtops with waterfall edge to island
- Low VOC custom cabinetry
- Fisher & Paykel 600mm 85L 7 Function Electric Oven
- Fisher & Paykel 600mm Ceramic Cooktop
- Fisher & Paykel 600mm Integrated Range Hood
- 1 3/4 bowl stainless steel sink with drainer
- Phoenix taps WELS rated water saving chrome flick mixer
- Tiled splashback
- 2 compartment recycling bin and cutlery tray insert

### PANTRY

- Low VOC custom cabinetry + tiled splashback
- 600x300 ceramic floor tile

### LAUNDRY

- Low VOC custom cabinetry
- Stainless steel insert trough
- Phoenix taps WELS rated water saving chrome flick mixer
- Tiled splashback
- Chrome finish hot and cold tap fittings for washing machine
- 600x300 ceramic floor tile

### BATHROOM

- 20mm recycled glass benchtop
- Low VOC custom cabinetry
- White vitreous china basin
- 900x1200 fixed wall mirror
- Waterproofing to all tiled areas
- 600x300 ceramic floor and wall tiles to wet areas, 2550mm high to shower
- 600x300 ceramic tiled shower base set-in floor
- 1950mm semi-frameless shower screens with pivot door
- Phoenix taps WELS rated water saving chrome finish plumbing fixtures + fittings
- WELS rated water saving toilet suites

### ELECTRICAL & SAFETY

- Kitchen 4x GPO, 3x downlights, 1x telephone point or 1x data point
- Living/Dining 3x GPO, 3x downlights, 1x TV point
- Bathroom/Laundry/Utility 2x GPO, 1x downlight, 1x exhaust fan
- Bedroom/Rumpus 2x GPO, 1x ceiling fan with light
- External 1x single flood light with sensor, 2x external GPO
- Smoke detectors hard wired with battery backup
- Energy saving LED to all downlights

### EXCLUSIONS POA

- Pre-construction design fees
- Excavations of site if required
- Driveway construction
- Transport/Delivery Fees
- Service connections
- Balustrade/handrails

\*Please note: Secondary dwellings, Extension projects and projects under 60m2 do not include solar power systems or water tanks.

# ECOLIV<sup>®</sup>

## Contact us

The EcoHub Display Centre  
1114 Bass Hwy, The Gurdies  
VIC 3984

Phone +61 (3) 5672 5196  
Email [info@ecoliv.com.au](mailto:info@ecoliv.com.au)  
Visit [ecoliv.com.au](http://ecoliv.com.au)

## Join our community

