



ECOLIV®

EcoHut range

Exquisite quality meets contemporary and sustainable design in our EcoHut range of luxury accommodation. Offering three exclusive designs, our one and two-bedroom modular cabins are the ideal solution for deluxe tourist accommodation, a dream retreat, a quiet home studio or a functional cabin.

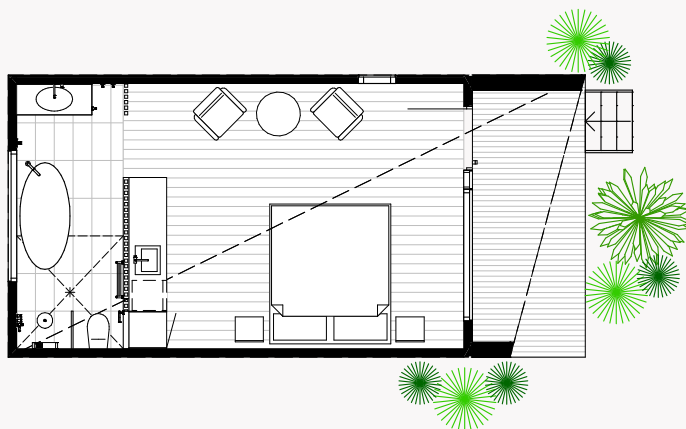
Make your stays sustainable

Perfect for luxury accommodation and eco-friendly retreats, or even a contemporary home studio, our EcoHut range features three exclusive designs of one and two bedroom modular cabins to choose from.

Like all Ecoliv homes, our EcoHut range is designed for living harmoniously with the natural Australian environment. Impress your guests with hallmarks of sophisticated design such as 100 percent wool carpets and Tasmanian oak engineered flooring plus sustainable features like benchtops made from recycled glass bottles and off-grid service capabilities.

Explore our EcoHut designs and floor plans to find the right cabin design for you. Looking for something different? Discover our EcoGeneration, and EcoLiving modular home designs or view our featured custom home builds for a completely tailored approach.

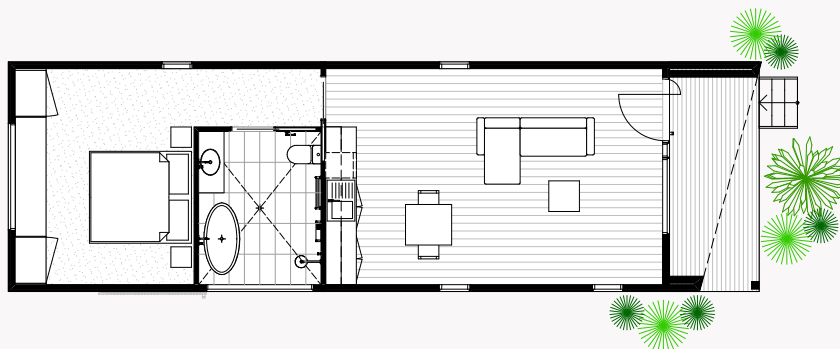
1A



EcoHut^{1A}

Modules	1
Area	33.88m ²
Deck	7.52m ²
Length	9.20m
Width	4.50m
Height	3.7m
Price	\$240,000 + GST

1B



EcoHut^{1B}

Modules	1
Area	58.26m ²
Deck	7.9m ²
Length	14.7m
Width	4.5m
Height	3.7m
Price	\$305,000 + GST

2A



EcoHut^{2A}

Modules	1
Area	72.18m ²
Deck	7.9m ²
Length	17.79m
Width	4.5m
Height	3.7m
Price	\$367,000 + GST

Standard inclusions

EcoHut range

ECOLIV®

SITE & FOUNDATIONS

- Footings to Class 'M' soil classification
- 450mm diameter bored pier concrete pad
- 90x90mm galvanised steel stumps to 400mm (H)
- NCC-compliant termite treatment

SERVICES

- 180-litre heat pump hot water system
- Connection of services available from building perimeter

CONSTRUCTION

- NCC-compliant structure (local, state and national compliance)
- Plantation pine frames and trusses
- Bulk insulation – R0.2 Aircell roof blanket, ceiling R6, walls R2.5, floor R6 (subfloor sealed)
- Vapour-permeable membrane wall wrap
- BAL (Bushfire Attack Level) 12.5 construction
- Wind rating to N2

EXTERIOR

- Trimdeck profile Colorbond-colour roofing and accessories
- Weathertex Weathergroove Smooth 300mm zero carbon cladding
- Haymes low-VOC paint finish to all external surfaces – one colour
- AWS 2400mm (H) powder-coated aluminium double-glazed windows and sliding door units
- Fly screens to all openable windows and sliding doors
- 920mm solid core entry door with feature handle
- Australian hardwood decking and external steps as detailed in floorplan

INTERIOR

- 3100-2550mm raked ceiling to Living with timber veneer lining
- 2550mm ceiling height to all other rooms
- 10mm plasterboard to walls and ceilings
- Villaboard to tiled areas
- 67mm primed pine square-set skirting and architraves
- Haymes low-VOC paint finish to internal surfaces (one colour)
- Redicote 2340mm hinged internal doors
- Gainsborough brushed chrome lever door furniture, cushion door stops
- Tasmanian Oak 14.3mm engineered timber flooring with low-VOC scratch-resistant finish

KITCHENETTE

- 20mm Eco Benchtops recycled glass benchtop
- Custom Laminex AbsoluteMatte / Laminex TrueScale AbsoluteGrain finish joinery
- Stainless steel 32-litre sink with drainer
- Phoenix WELS-rated brushed nickel sink mixer tap
- Feature tile splashback
- Single bin and cutlery tray insert

BATHROOMS

- 20mm Eco Benchtops recycled glass benchtops
- Custom Laminex TrueScale AbsoluteGrain finish joinery
- Solid surface basin
- Solid surface bath (design-specific)
- Waterproofing to wet areas
- 600x300mm ceramic floor and wall tiles to wet areas; full-height tiling to 3 walls
- 600x300mm ceramic tiled shower base set in floor
- 2000mm (H) frameless shower screens

- Phoenix WELS-rated brushed nickel taps, shower and accessories
- Wall-faced WELS-rated toilet suites

BEDROOMS

- Custom Laminex AbsoluteMatte / Laminex TrueScale AbsoluteGrain finish robe joinery
- Bremworth 100% wool carpet

LIGHTING – INTERNAL

- LED strip lighting to kitchenette
- 6x surface-mounted feature downlights to kitchen/dining/living
- 6x 9W LED downlights (4x Ecohut1A)
- 1x 9W LED downlight to hallway per 2lm

ELECTRICAL – INTERNAL

- Smoke detectors hardwired with battery backup
- 1x exhaust/light/heater to bathrooms
- 1x LED backlit mirror with magnifier and demister to bathrooms
- 1x ceiling fan with LED light to bedroom
- 2x double GPOs to kitchenette
- 1x double GPOs to living/dining
- 1x double GPO to bathrooms
- 2x double GPOs to bedrooms
- 1x TV point/data point to living

LIGHTING – EXTERNAL

- 1x wall light

ELECTRICAL – EXTERNAL

- 1x isolator switch to HWS
- 1x double GPO to deck

EXCLUSIONS

- Driveway construction
- Vegetation removal
- Excavation
- New service connections
- Connection of services from building perimeter to infrastructure mains
- Pre-construction design fees
- Nominated consultant fees
- Approval application fees
- Transport/delivery fees
- Decking and steps POA (design specific)

*Secondary dwellings, Extension projects and projects under 60m2 do not include solar power systems or water tanks.



Contact us

The EcoHub Display Centre
1114 Bass Hwy, The Gurdies
VIC 3984

Phone +61 (3) 5672 5196
Email info@ecoliv.com.au
Visit ecoliv.com.au

Join our community

