



EcoLiving range

Affordability and sustainability need not be mutually exclusive. Our versatile EcoLiving range is perfect for a family forever home, a modern downsize or an attractive holiday house with all the creature comforts.

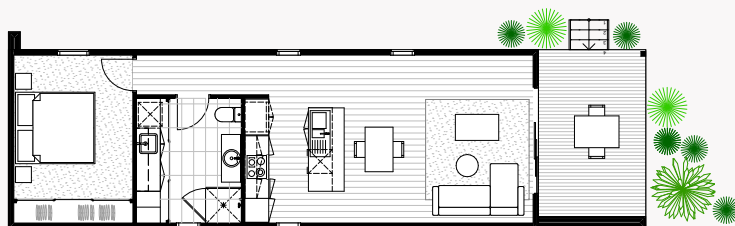
Living in sustainable style

Our versatile EcoLiving range of modular homes is perfect for a family forever home, a modern downsize or a dream holiday house. With four inspiring floor plans to choose from, affordable sustainable living has never looked this good.

Like all Ecoliv homes, our EcoLiving range is designed for living harmoniously with the natural Australian environment. Live in comfort with hallmarks of sophisticated design such as 100 percent wool carpets and Tasmanian oak engineered flooring plus sustainable features like a 2.2kw grid connected solar power system and 10,000 litre water tank included as standard.

Explore our EcoLiving designs and floor plans to find the right home for you. Looking for something different? Discover our EcoHut, and EcoGeneration modular home designs or view our featured custom home builds for a completely tailored approach.

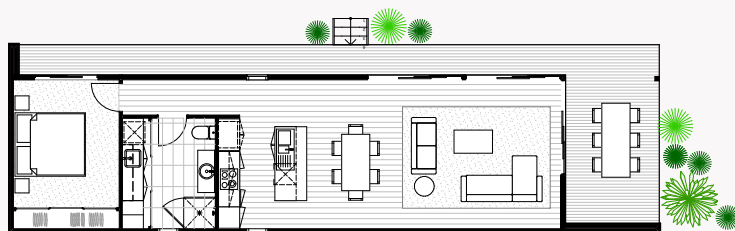
1A



EcoLiving^{1A}

Modules	1
Area	60m²
Deck	12.15m²
Length	16.05m
Width	4.5m
Height	3.4m
Price	\$272,000 + GST

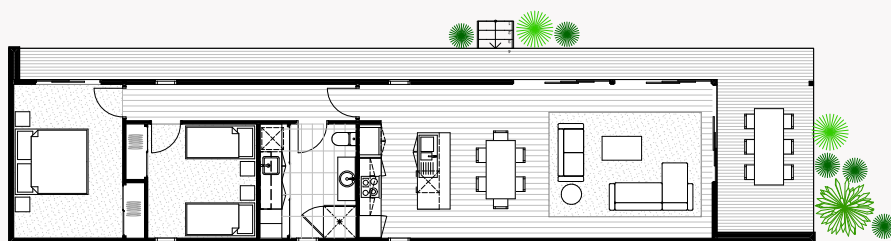
1B



EcoLiving^{1B}

Modules	2
Area	71.1m ²
Deck	27.73m ²
Length	18.5m
Width	5.4m
Height	3.4m
Price	\$376,000 + GST

2A

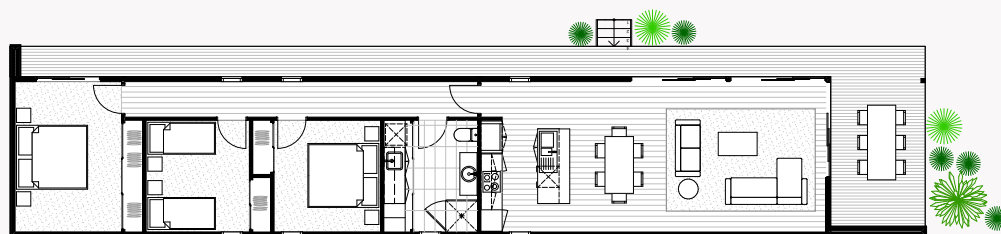


EcoLiving^{2A}

Modules	2
Area	87.7m ²
Deck	30.88m ²
Length	22.19m
Width	5.4m
Height	3.4m
Price	\$431,000 + GST



3A

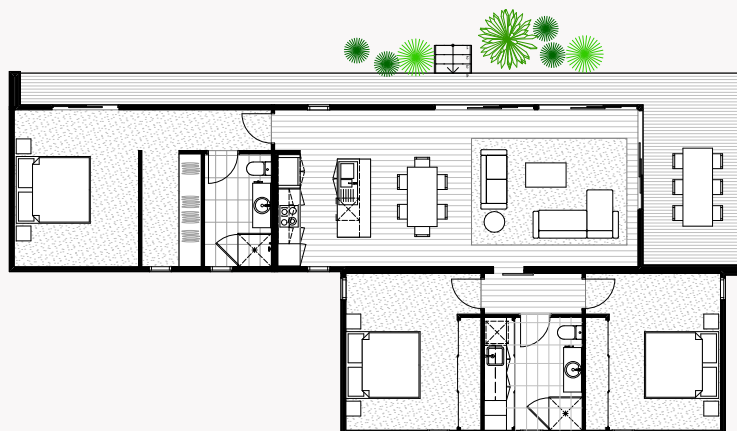


EcoLiving^{3A}

Modules	2
Area	103.9m ²
Deck	33.96m ²
Length	25.79m
Width	5.4m
Height	3.4m
Price	\$477,000 + GST



3B

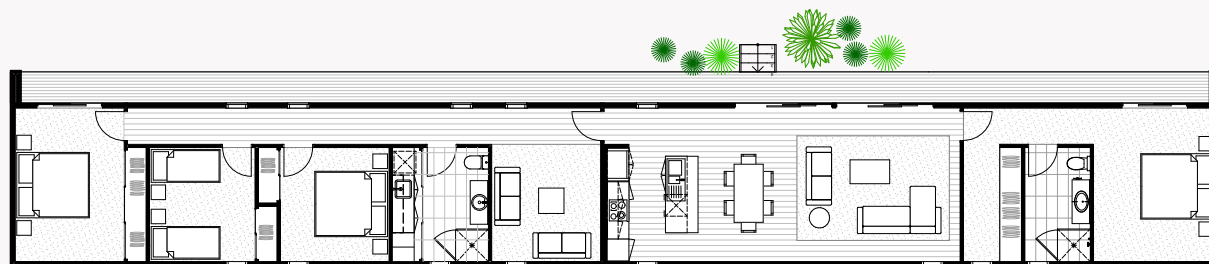


EcoLiving^{3B}

Modules	3
Area	123.45m ²
Deck	37.83m ²
Length	19.385m
Width	9.81m
Height	3.4m
Price	\$537,000 + GST



4A



EcoLiving^{4A}

Modules	3
Area	149.8m ²
Deck	37.83m ²
Length	33.29m
Width	5.4m
Height	3.4m
Price	\$593,000 + GST



Standard inclusions

ECOLIV®

EcoLiving range

ENERGY EFFICIENCY / SUSTAINABILITY

- 7 Star energy rating (via site specific passive solar design recommendations)
- 2.22 KW grid connect solar power system
- 10,000 litre poly water tank connected to washing machine and toilet
- 270 litre heat pump hot water system
- Sealing with vapour permeable membrane
- Zero carbon footprint cladding
- Double glazed argon filled aluminium windows and sliding doors
- Low VOC paints and sealers
- Low VOC custom cabinetry
- WELS rated plumbing fixtures
- LED downlights
- Bulk insulation - R1.5 Aircell roof blanket, ceiling R6 batts, walls R2.5, floor R6. (subfloor sealed)

SITE & FOUNDATIONS

- Footings (to class 'M' soil classification)
- 600mm diameter bored pier concrete pad with galvanised steel stumps to 400mm high
- Connection of services available from perimeter of building
- NCC termite treatment

EXTERIOR

- NCC compliant structure (local, state and national compliance)
- Plantation pine frames and trusses
- TrimDeck profile colorbond colour roofing and accessories
- Zero carbon footprint Weathertex cladding
- Australian made Haymes Low VOC paint finish to all external surfaces (one colour)
- AWS powder coated aluminium double-glazed windows and sliding door units
- Fly screens to all openable windows and sliding doors
- One garden tap connected to water tank
- BAL (Bushfire Attack Level) 12.5 construction

- Australian hardwood decking + external steps as detailed in floorplan
- Wind rating to N2

INTERIOR

- 2550mm ceiling height throughout
- 10mm plasterboard to walls and ceilings
- Insulation to external walls, floors and ceilings
- Eazypine 67mm square set skirting and architraves
- Villaboard (water resistant) to bathroom
- Redicote 2100mm hinged internal doors with brushed chrome lever door furniture
- Cushion door stops to all doors opening on to walls
- 2500mm built-in robes with shelving and hanging rails
- Wool carpet to bedrooms
- Tasmanian Oak 14.3mm engineered timber flooring with low VOC scratch resistant finish
- Australian made Haymes low VOC paint finish to all internal surfaces (one colour)

KITCHEN

- 20mm recycled glass benchtops with waterfall edge to island
- Low VOC custom cabinetry
- Fisher & Paykel 600mm 85L 7 Function Electric Oven
- Fisher & Paykel 600mm Ceramic Cooktop
- Fisher & Paykel 600mm Integrated Range Hood (externally ducted)
- 1 bowl stainless steel sink with drainer
- Phoenix taps WELS rated water saving chrome flick mixer
- Tiled splashback
- 2 compartment recycling bin and cutlery tray insert

LAUNDRY

- Low VOC custom cabinetry
- Stainless steel insert trough
- Phoenix taps WELS rated water saving chrome flick mixer
- Tiled splashback
- Chrome finish hot and cold tap fittings for washing machine
- 600x300 ceramic floor tile

BATHROOM

- 20mm recycled glass benchtops
- Low VOC custom cabinetry
- White vitreous china basin
- 900x1200 fixed wall mirror
- Waterproofing to all tiled areas
- 600x300 ceramic floor and wall tiles to wet areas, 2550mm high to shower
- 600x300 ceramic tiled shower base set-in floor
- 1950mm semi-frameless shower screens with pivot door
- Phoenix taps WELS rated water saving chrome finish plumbing fixtures + fittings
- WELS rated water saving toilet suites

ELECTRICAL & SAFETY

- Kitchen 4x GPO, 3x downlights, 1x telephone point or 1x data point
- Living/Dining 3x GPO, 3x downlights, 1x TV point
- Bathroom/Laundry/Utility 2x GPO, 1x downlight, 1x exhaust fan
- Bedroom/Rumpus 2x GPO, 1x ceiling fan with light
- External 1x single flood light with sensor, 2x external GPO
- Smoke detectors hard wired with battery backup
- Energy saving LED to all downlights

EXCLUSIONS POA

- Pre-construction design fees
- Excavations of site if required
- Driveway construction
- Transport/Delivery Fees
- Service connections
- Balustrade/handrails

*Please note: Secondary dwellings, Extension and projects under 60m2 are to be connected to existing services. Therefore no solar power systems or water tanks are included.

ECOLIV[®]

Contact us

The EcoHub Display Centre
1114 Bass Hwy, The Gurdies
VIC 3984

Phone +61 (3) 5672 5196
Email info@ecoliv.com.au
Visit ecoliv.com.au

Join our community

