



EcoLiving range

Affordability and sustainability need not be mutually exclusive. Our versatile EcoLiving range is perfect for a family forever home, a modern downsize or an attractive holiday house with all the creature comforts.

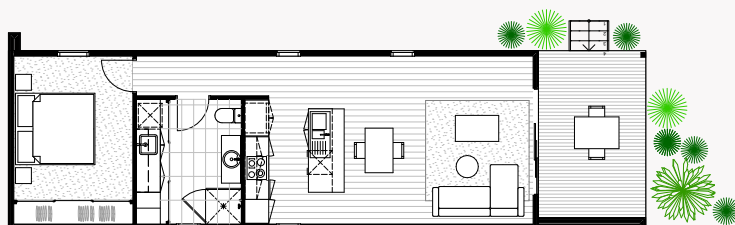
Living in sustainable style

Our versatile EcoLiving range of modular homes is perfect for a family forever home, a modern downsize or a dream holiday house. With four inspiring floor plans to choose from, affordable sustainable living has never looked this good.

Like all Ecoliv homes, our EcoLiving range is designed for living harmoniously with the natural Australian environment. Live in comfort with hallmarks of sophisticated design such as 100 percent wool carpets and Tasmanian oak engineered flooring plus sustainable features like a 3.08kw grid connected solar power system and 10,000 litre water tank included as standard.

Explore our EcoLiving designs and floor plans to find the right home for you. Looking for something different? Discover our EcoHut, and EcoGeneration modular home designs or view our featured custom home builds for a completely tailored approach.

1A

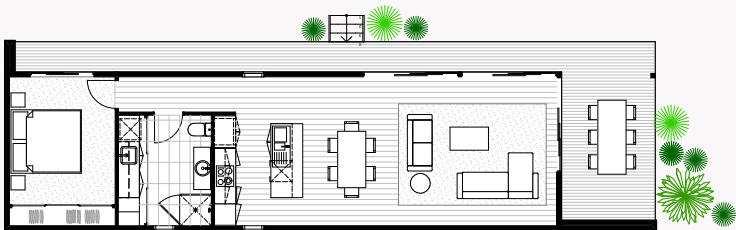


EcoLiving^{1A}

Modules	1
Area	60m ²
Deck	12.15m ²
Length	16.05m
Width	4.5m
Height	3.4m
Price	\$272,000 + GST



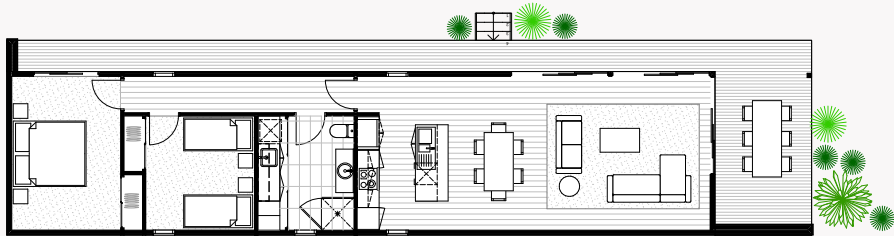
1B



EcoLiving^{1B}

Modules	2
Area	71.1m ²
Deck	27.73m ²
Length	18.5m
Width	5.4m
Height	3.4m
Price	\$376,000 + GST

2A

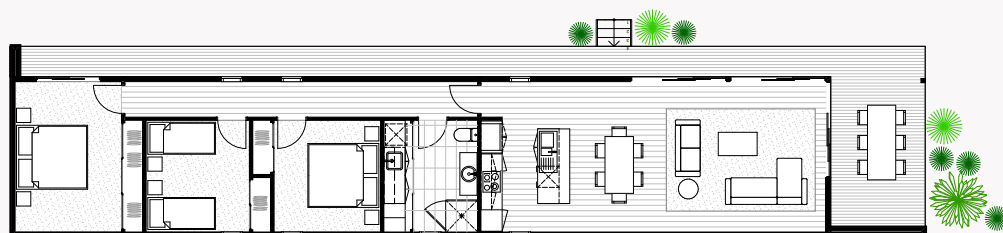


 2  1  1

EcoLiving^{2A}

Modules	2
Area	87.7m ²
Deck	30.88m ²
Length	22.19m
Width	5.4m
Height	3.4m
Price	\$431,000 + GST

3A

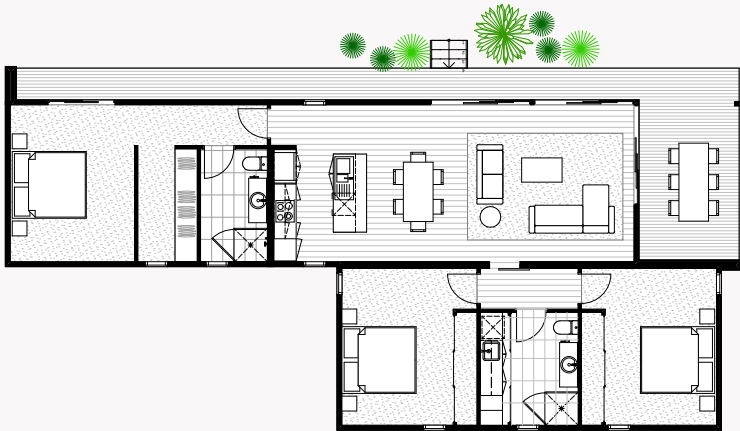


EcoLiving^{3A}

Modules	2
Area	103.9m ²
Deck	33.96m ²
Length	25.79m
Width	5.4m
Height	3.4m
Price	\$477,000 + GST



3B

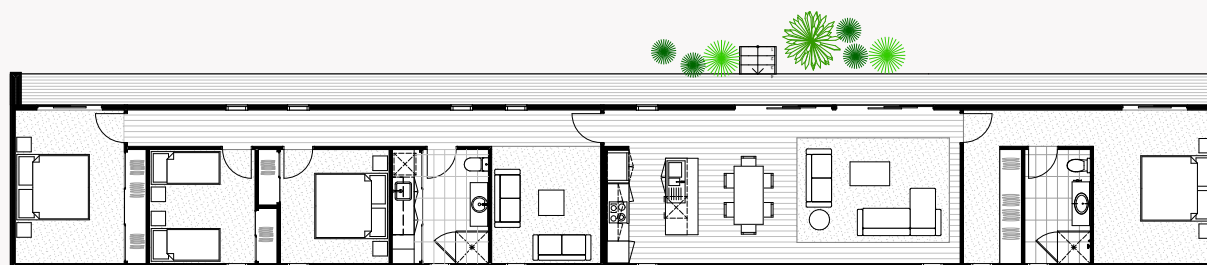


3 2 1

EcoLiving^{3B}

Modules	3
Area	123.45m ²
Deck	37.83m ²
Length	19.385m
Width	9.81m
Height	3.4m
Price	\$537,000 + GST

4A



EcoLiving^{4A}

Modules	3
Area	149.8m ²
Deck	37.83m ²
Length	33.29m
Width	5.4m
Height	3.4m
Price	\$593,000 + GST



Standard inclusions

EcoLiving range

ECOLIV®

SITE & FOUNDATIONS

- Footings to Class 'M' soil classification
- 450mm diameter bored pier concrete pad
- 90x90mm galvanised steel stumps to 400mm (H)
- NCC-compliant termite treatment

SERVICES

- 3.08kW grid-connect solar power system*
- 10,000-litre round poly water tank connected to washing machine and toilet*
- 270-litre heat pump hot water system
- Connection of services available from building perimeter

CONSTRUCTION

- NCC-compliant structure (local, state and national compliance)
- Plantation pine frames and trusses
- Bulk insulation – R0.2 Aircell roof blanket, ceiling R6, walls R2.5, floor R6 (subfloor sealed)
- Vapour-permeable membrane wall wrap
- BAL (Bushfire Attack Level) 12.5 construction
- Wind rating to N2

EXTERIOR

- Trimdeck profile Colorbond-colour roofing and accessories
- Weathertex Weathergroove Smooth 150mm zero carbon cladding
- Haymes low-VOC paint finish to all external surfaces – one colour
- AWS 2100mm (H) powder-coated aluminium double-glazed windows and sliding door units
- Fly screens to all openable windows and sliding doors
- 870mm solid core entry door with feature handle

- One garden tap connected to water tank
- Australian hardwood decking and external steps as detailed in floorplan

INTERIOR

- 3000–2550mm raked ceiling to Living with timber veneer lining
- 2550mm ceiling height to all other rooms
- 10mm plasterboard to walls and ceilings
- Villaboard to tiled areas
- 67mm primed pine square-set skirting and architraves
- Haymes low-VOC paint finish to internal surfaces (one colour)
- Redicote 2040mm hinged internal doors
- Gainsborough brushed chrome lever door furniture, cushion door stops
- Tasmanian Oak 14.3mm engineered timber flooring with low-VOC scratch-resistant finish

KITCHEN

- 20mm Eco Benchtops recycled glass benchtop
- Custom Laminex Natural / Laminex Impressions Chalk finish joinery
- Fisher & Paykel 600mm electric oven
- Fisher & Paykel 600mm cooktop
- Fisher & Paykel 600mm integrated rangehood (externally ducted)
- Stainless steel 1080-litre sink with drainer
- Phoenix WELS-rated brushed chrome mixer tap
- Feature tile splashback
- Two-compartment recycling bin system and cutlery tray insert

PANTRY

- 20mm Eco Benchtops recycled glass benchtop
- Custom Laminex Natural / Laminex Impressions Chalk finish joinery
- Feature tile splashback

LAUNDRY

- 20mm Eco Benchtops recycled glass benchtop
- Custom Laminex Natural / Laminex Impressions Chalk finish joinery
- Feature tile splashback
- Stainless steel 45-litre insert trough
- Phoenix WELS-rated chrome finish sink mixer tap
- Chrome-finish hot and cold tap fittings for washing machine
- 600x300mm ceramic floor tile (Laundry)

BATHROOMS

- 20mm Eco Benchtops recycled glass benchtops
- Custom Laminex Impressions Chalk finish joinery
- Vitreous China basin
- Fixed mirror
- Waterproofing to wet areas
- 600x300mm ceramic floor and wall tiles; 2550mm H to shower
- 600x300mm ceramic tiled shower base set in floor
- 1950mm (H) semi-frameless shower screen with pivot door
- Phoenix WELS-rated chrome, shower and accessories
- Close coupled WELS-rated toilet suites

BEDROOMS

- Space maker Access robe door system 2100mm H
- Bremworth 100% wool carpet

LIGHTING – INTERNAL

- 6x 9W LED downlights to kitchen/dining/living
- 1x 9W LED downlights to pantry
- 1x 9W LED downlights to laundry
- 1x 9W LED downlight to bathroom
- 1x 9W LED downlight to hallway per 2lm

ELECTRICAL – INTERNAL

- Smoke detectors hardwired with battery backup
- 1x exhaust to bathrooms
- 1x ceiling fan with LED light to bedroom
- 4x double GPOs to kitchen
- 3x double GPOs to living/dining
- 2x double GPOs to pantry
- 2x double GPOs to laundry
- 1x double GPO to bathrooms
- 2x double GPOs to bedrooms
- 1x TV point/data point to living

LIGHTING – EXTERNAL

- 1x wall light
- 1x wall sensor light
- 2x downlight to alfresco

ELECTRICAL – EXTERNAL

- 1x isolator switch to HWS
- 1x double GPO to water tank pump
- 1x double GPO to alfresco

EXCLUSIONS

- Driveway construction
- Vegetation removal
- Excavation
- New service connections
- Connection of services from building perimeter to infrastructure mains
- Pre-construction design fees
- Nominated consultant fees
- Approval application fees
- Transport/delivery fees
- Decking and steps POA (design specific)

*Secondary dwellings, Extension projects and projects under 60m2 do not include solar power systems or water tanks.



Contact us

The EcoHub Display Centre
1114 Bass Hwy, The Gurdies
VIC 3984

Phone +61 (3) 5672 5196
Email info@ecoliv.com.au
Visit ecoliv.com.au

Join our community

