



## Sustainable today, regenerative tomorrow

The EcoGeneration range represents our next evolution in sustainable prefab modular living. With nine unique designed floorplans, each home balances regenerative design, energy performance and everyday comfort—designed to suit the Australian lifestyle and climate.

From two to four bedrooms, with flexible spaces for living, work or retreat spaces, each design adapts to your changing needs.

Constructed in our EcoHub using responsibly sourced materials, our prefab modular homes tread lightly—reducing waste, carbon and cost.

Explore smarter, climate-positive living with EcoGeneration.

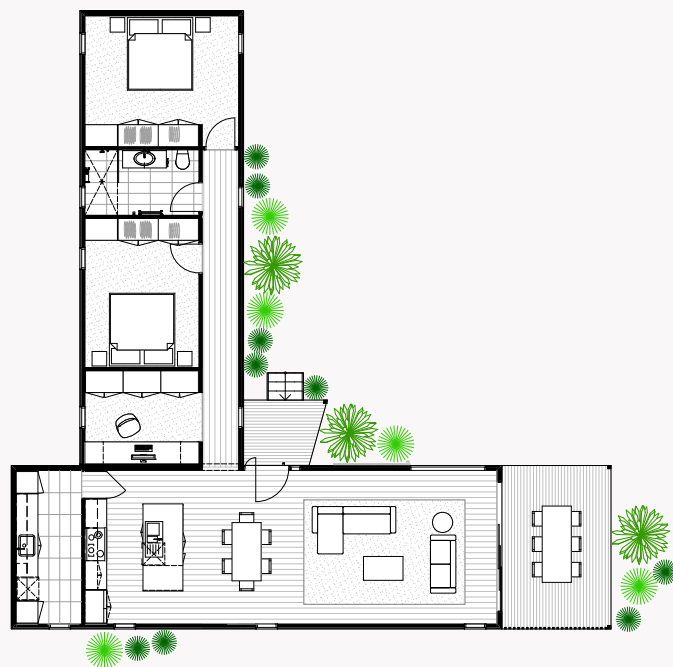
# EcoGeneration range

Thoughtfully designed and climate-positive, the EcoGeneration range adapts to your lifestyle—whether you're growing, downsizing or working from home. Each prefab modular home is solar-powered, all-electric and designed with low-impact materials to minimise waste, reduce bills and regenerate the environment. Built for comfort, made for the future, and designed to give back.

EcoGeneration

# 2 Bedroom floor plans

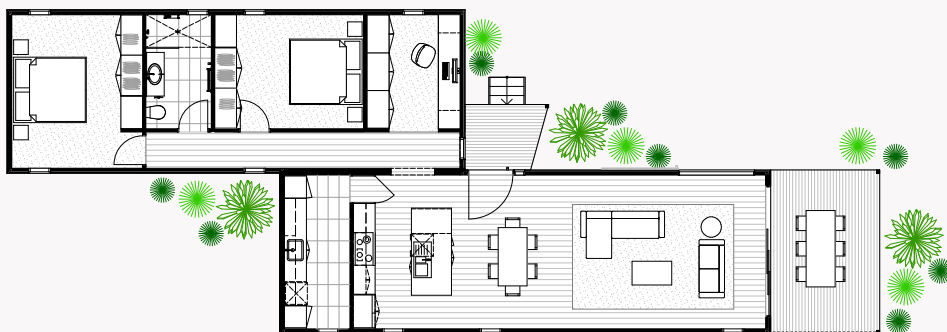
2A



## EcoGeneration<sup>2A</sup>

Modules	2
Area	117.05m <sup>2</sup>
Deck	17.19m <sup>2</sup>
Length	16.5m
Width	17.01m
Height	3.8m
Price	\$586,000 + GST

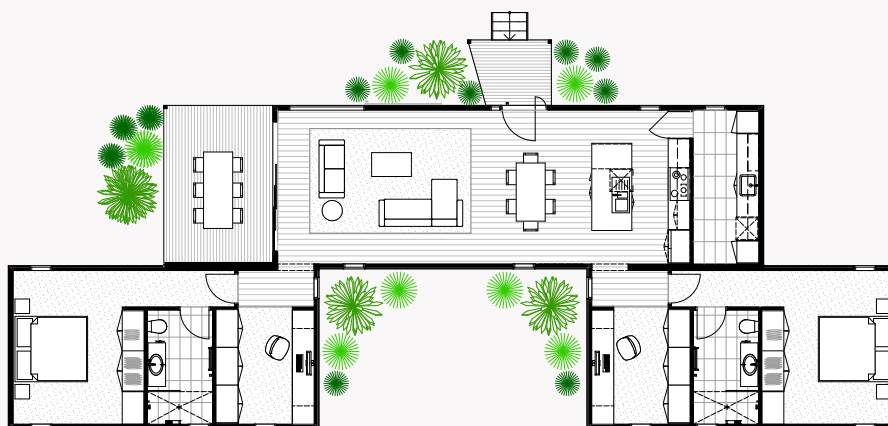
2B



## EcoGeneration<sup>2B</sup>

Modules	2
Area	116.99m <sup>2</sup>
Deck	17.19m <sup>2</sup>
Length	24m
Width	8.91m
Height	3.8m
Price	\$582,000 + GST

2C



## EcoGeneration<sup>2C</sup>

Modules	3
Area	137.15m <sup>2</sup>
Deck	17.19m <sup>2</sup>
Length	24.47m
Width	8.91m
Height	3.8m
Price	\$679,000 + GST



EcoGeneration

# 3 Bedroom floor plans

3A

ECOLIV<sup>®</sup>



### EcoGeneration<sup>3A</sup>

Modules	3
Area	148.68m <sup>2</sup>
Deck	17.19m <sup>2</sup>
Length	24.72m
Width	8.91m
Height	3.8m
Price	\$687,000 + GST



3B

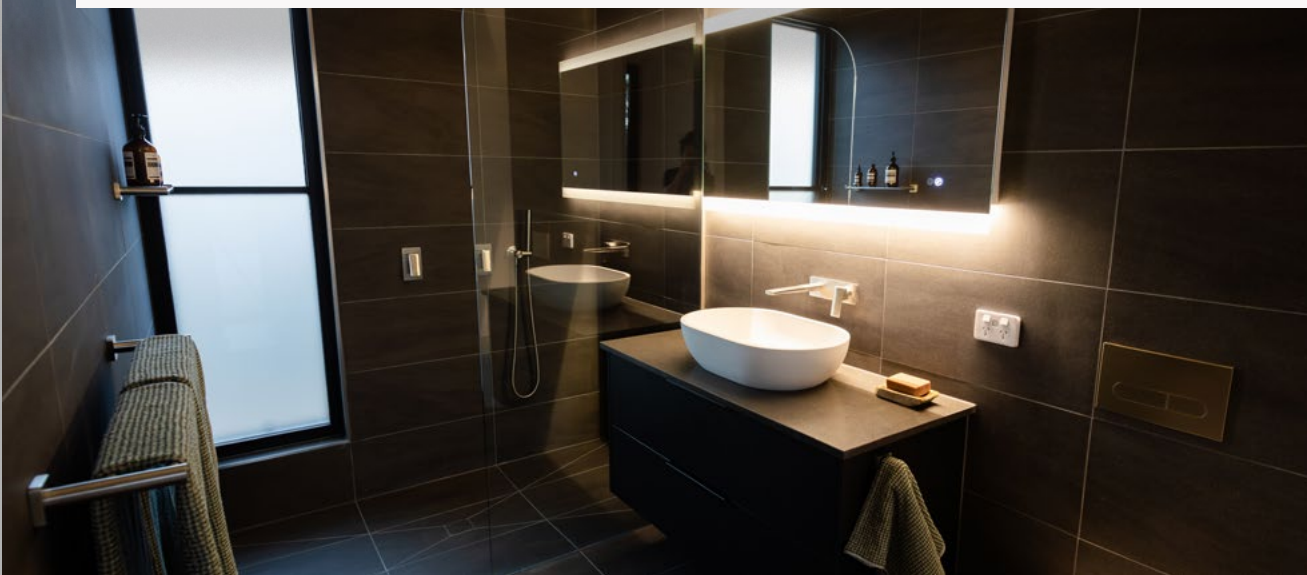
ECOLIV<sup>®</sup>



 3
  2.5
  2

## EcoGeneration<sup>3B</sup>

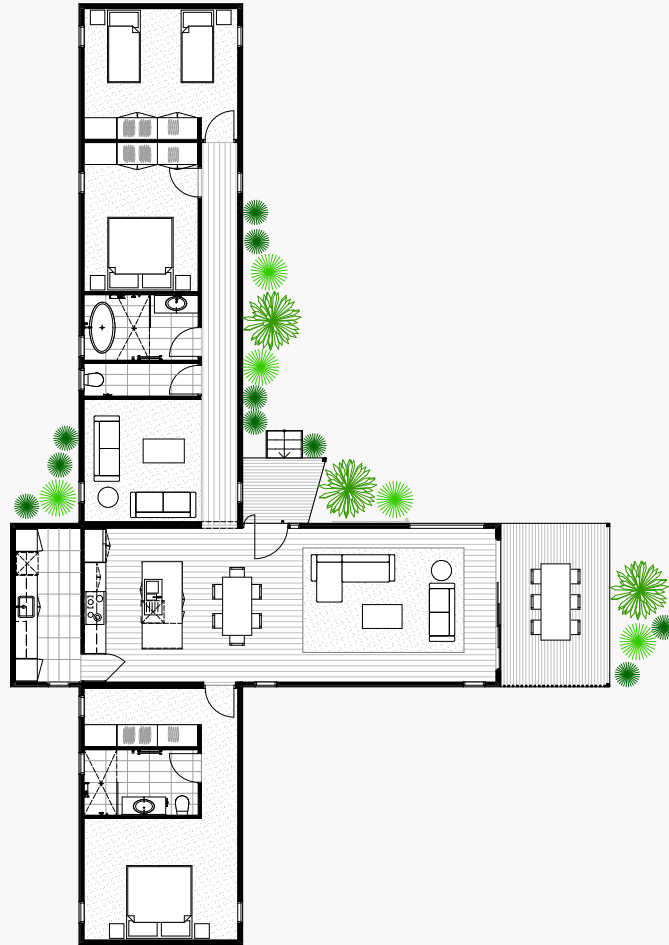
Modules	3
Area	156.73m <sup>2</sup>
Deck	17.19m <sup>2</sup>
Length	21.50m
Width	13.32m
Height	3.8m
Price	\$713,000 + GST





3C

ECOLIV<sup>®</sup>



 3
  2.5
  2

## EcoGeneration<sup>3C</sup>

Modules	3
Area	157.14m <sup>2</sup>
Deck	17.19m <sup>2</sup>
Length	16.50m
Width	25.92m
Height	3.8m
Price	\$726,000 + GST



3D



## EcoGeneration<sup>3D</sup>

Modules	3
Area	163.08m <sup>2</sup>
Deck	17.19m <sup>2</sup>
Length	25.95m
Width	8.91m
Height	3.8m
Price	\$752,000 + GST



EcoGeneration

# 4 Bedroom floor plans

4A



 4
  2.5
  2

## EcoGeneration<sup>4A</sup>

Modules	3
Area	172.05m <sup>2</sup>
Deck	17.19m <sup>2</sup>
Length	26m
Width	13.32m
Height	3.8m
Price	\$755,000 + GST

4B



 4
  2.5
  2

## EcoGeneration<sup>4B</sup>

Modules	3
Area	173.35m <sup>2</sup>
Deck	17.19m <sup>2</sup>
Length	25.11m
Width	20.91m
Height	3.8m
Price	\$779,000 + GST

# Standard inclusions

ECOLIV®

## EcoGeneration range

### SITE & FOUNDATIONS

- Footings to Class 'M' soil classification
- 450mm diameter bored pier concrete pad
- 90x90mm galvanised steel stumps to 400mm (H)
- NCC-compliant termite treatment

### SERVICES

- 5.28kW grid-connect solar power system\*
- 10,000-litre round poly water tank connected to washing machine and toilet\*
- 270-litre heat pump hot water system
- Connection of services available from building perimeter

### CONSTRUCTION

- NCC-compliant structure (local, state and national compliance)
- Plantation pine frames and trusses
- Bulk insulation – R0.2 Aircell roof blanket, ceiling R6, walls R2.5, floor R6 (subfloor sealed)
- Vapour-permeable membrane wall wrap
- BAL (Bushfire Attack Level) 12.5 construction
- Wind rating to N2

### EXTERIOR

- Trimdeck profile Colorbond-colour roofing and accessories
- Weathertex Weathergroove Smooth 300mm zero carbon cladding
- Haymes low-VOC paint finish to all external surfaces – one colour
- AWS 2400mm (H) powder-coated aluminium double-glazed windows and sliding door units
- Fly screens to all openable windows and sliding doors
- 920mm solid core entry door with feature handle

- One garden tap connected to water tank
- Australian hardwood decking and external steps as detailed in floorplan

### INTERIOR

- 3100–2550mm raked ceiling to Living with timber veneer lining
- 2550mm ceiling height to all other rooms
- 10mm plasterboard to walls and ceilings
- Villaboard to tiled areas
- 67mm primed pine square-set skirting and architraves
- Haymes low-VOC paint finish to internal surfaces (one colour)
- Redicote 2340mm hinged internal doors
- Gainsborough brushed chrome lever door furniture, cushion door stops
- Tasmanian Oak 14.3mm engineered timber flooring with low-VOC scratch-resistant finish

### KITCHEN

- 20mm Eco Benchtops recycled glass benchtop; 40mm to island bench
- Custom Laminex AbsoluteMatte / Laminex TrueScale AbsoluteGrain finish joinery
- Fisher & Paykel 900mm 100L 9-function electric oven
- Fisher & Paykel 900mm 5-zone induction cooktop
- Fisher & Paykel 900mm integrated rangehood (externally ducted)
- Stainless steel 870-litre sink with drainer
- Phoenix WELS-rated brushed nickel sink mixer tap
- Feature tile splashback
- Two-compartment recycling bin system and cutlery tray insert

### LAUNDRY / PANTRY

- 20mm Eco Benchtops recycled glass benchtop
- Custom Laminex AbsoluteMatte / Laminex TrueScale AbsoluteGrain finish joinery
- Feature tile splashback
- Stainless steel 32-litre insert trough
- Phoenix WELS-rated brushed nickel finish sink mixer tap
- Chrome-finish hot and cold tap fittings for washing machine
- 600x300mm ceramic floor tile
- In-drawer laundry hamper

### BATHROOMS

- 20mm Eco Benchtops recycled glass benchtops
- Custom Laminex TrueScale AbsoluteGrain finish joinery
- Solid surface basin
- Solid surface bath (design-specific)
- Waterproofing to wet areas
- 600x300mm ceramic floor and wall tiles to wet areas; full-height tiling to 3 walls
- 600x300mm ceramic tiled shower base set in floor
- 2000mm (H) frameless shower screens
- Phoenix WELS-rated brushed nickel taps, shower and accessories
- Wall-faced WELS-rated toilet suites

### POWDER ROOM

- 600x300mm ceramic floor tile
- Wall-faced WELS-rated toilet suite
- Phoenix WELS-rated brushed nickel taps and accessories
- 1x exhaust fan

### BEDROOMS

- Custom Laminex AbsoluteMatte / Laminex TrueScale AbsoluteGrain finish robe joinery
- Bremworth 100% wool carpet

### STUDY

- Custom Laminex AbsoluteMatte / Laminex TrueScale AbsoluteGrain finish joinery
- Metabox filing drawers

### LIGHTING – INTERNAL

- LED strip lighting to kitchen, pantry/laundry, study, bedroom study nook
- 6x surface-mounted feature downlights to kitchen/dining/living
- 1x 9W LED downlight to study
- 2x 9W LED downlights to pantry/laundry
- 1x 9W LED downlight to powder room
- 1x 9W LED downlight to hallway per 2lm

### ELECTRICAL – INTERNAL

- Smoke detectors hardwired with battery backup
- 1x exhaust/light/heater to bathrooms
- 1x LED backlit mirror with magnifier and demister to bathrooms
- 1x ceiling fan with LED light to bedroom
- 4x double GPOs to kitchen
- 3x double GPOs to living/dining
- 2x double GPOs to laundry/pantry
- 1x double GPO to bathrooms
- 2x double GPOs to bedrooms/rumpus
- 2x double GPOs to study
- 1x TV point/data point to living
- 1x TV point/data point to study

### LIGHTING – EXTERNAL

- 1x wall light
- 1x wall sensor light
- 2x downlight to alfresco

### ELECTRICAL – EXTERNAL

- 1x isolator switch to HWS
- 1x double GPO to water tank pump
- 1x double GPO to alfresco

### EXCLUSIONS

- Driveway construction
- Vegetation removal
- Excavation
- New service connections
- Connection of services from building perimeter to infrastructure mains
- Pre-construction design fees
- Nominated consultant fees
- Approval application fees
- Transport/delivery fees
- Decking and steps POA (design specific)

\*Secondary dwellings, Extension projects and projects under 60m<sup>2</sup> do not include solar power systems or water tanks.



## Contact us

The EcoHub Display Centre  
1114 Bass Hwy, The Gurdies  
VIC 3984

Phone +61 (3) 5672 5196  
Email [info@ecoliv.com.au](mailto:info@ecoliv.com.au)  
Visit [ecoliv.com.au](http://ecoliv.com.au)

## Join our community

