



ECOLIV®

Designed for today with tomorrow in mind

Our new EcoGeneration range presents the pinnacle of inspired modular home design and sustainable living. Featuring 15 unique floor plans to choose from, our EcoGeneration range offers sophisticated design without compromising the natural environment.

Like all Ecoliv homes, our EcoGeneration range is designed for living harmoniously with the natural Australian environment. Taking sustainability to the next level, our new range is climate responsive and operationally carbon neutral. The host of eco-friendly features includes, but is not limited to, a 5.55kw grid-connected solar power system, 10,000 litre water tank, and 250 litre energy efficient hot water system as standard.

Thoughtful design and architectural features support the comfort and wellbeing of the building's occupants, deliver long-term energy efficiency, and protect the natural environment for future generations.

Explore our EcoGeneration designs and floor plans to find the right design for you. Choose from two, three or four bedrooms with a selection of modules including additional living areas, bedrooms, bathrooms and workspaces to suit your family (whatever the size).

EcoGeneration range

Thoughtfully designed, functional and light-filled, our carbon neutral EcoGeneration range scales to suit varying household sizes and occupant needs. From growing children to visiting family or working from home to downsizing, each home allows you to live in comfort, with less waste.

EcoGeneration

2 Bedroom floor plans

2A

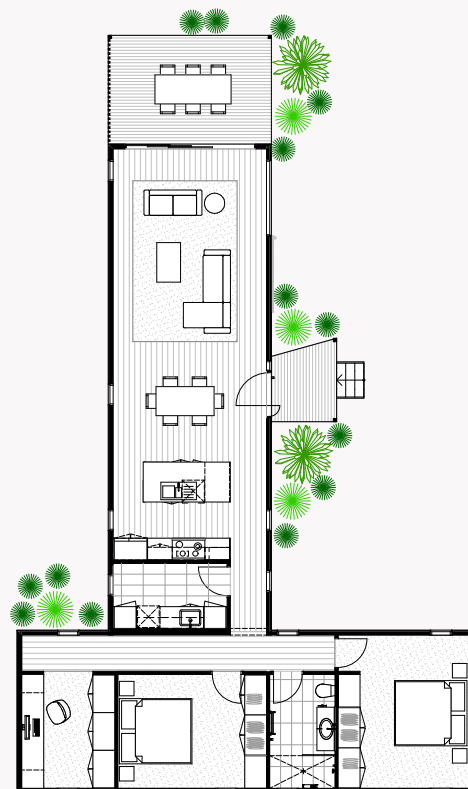


EcoGeneration^{2A}

Modules	2
Area	117.05m ²
Deck	17.19m ²
Length	16.5m
Width	17.01m
Height	3.8m
Price	\$532,000 + GST



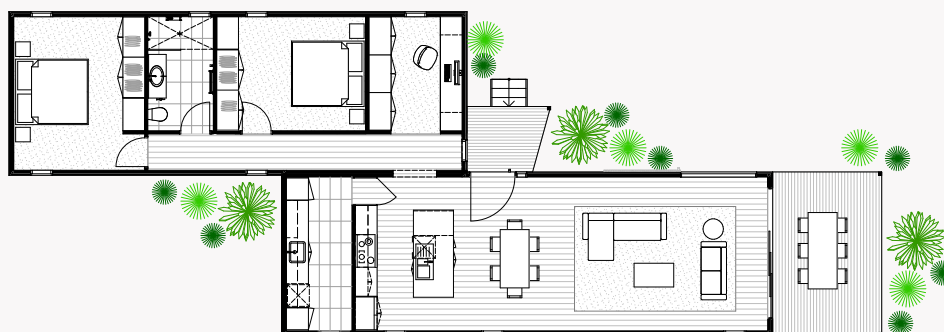
2B



EcoGeneration^{2B}

Modules	2
Area	117.05m ²
Deck	17.19m ²
Length	12.6m
Width	20.91m
Height	3.8m
Price	\$536,000 + GST

2C



EcoGeneration^{2C}

Modules	2
Area	116.99m ²
Deck	17.19m ²
Length	24m
Width	8.91m
Height	3.8m
Price	\$528,000 + GST



2D

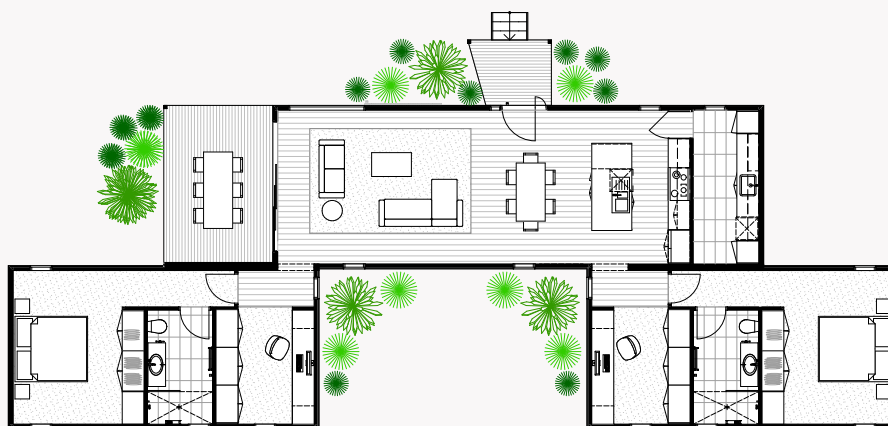


EcoGeneration^{2D}

Modules	3
Area	137.15m ²
Deck	17.19m ²
Length	24.63m
Width	13.32m
Height	3.8m
Price	\$627,000 + GST



2E

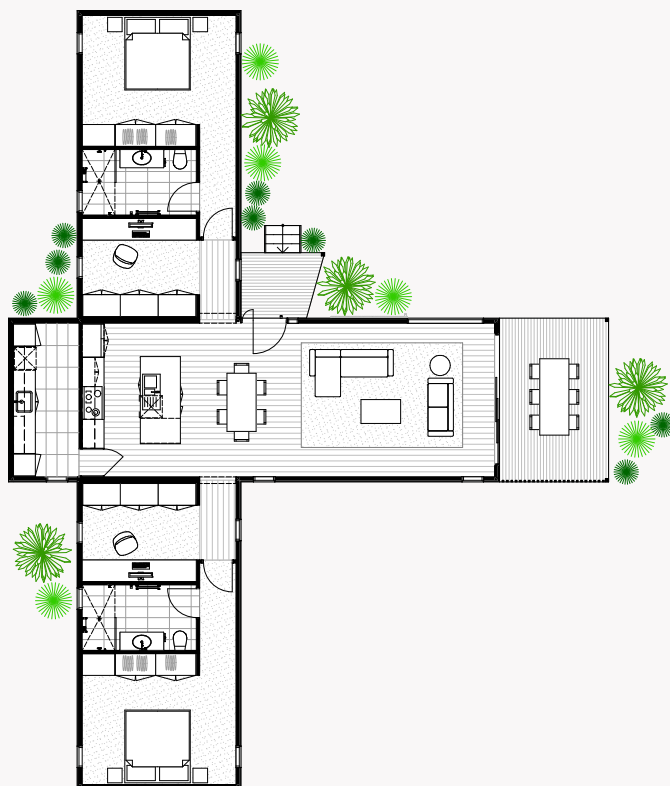


EcoGeneration^{2E}

Modules	3
Area	137.15m ²
Deck	17.19m ²
Length	24.47m
Width	8.91m
Height	3.8m
Price	\$622,000 + GST



2F



EcoGeneration^{2F}

Modules	3
Area	136.89m ²
Deck	17.19m ²
Length	16.45m
Width	21.42m
Height	3.8m
Price	\$619,000 + GST

EcoGeneration

3 Bedroom floor plans

3A



EcoGeneration^{3A}

Modules	2
Area	141.05m ²
Deck	17.19m ²
Length	27.07m
Width	8.91m
Height	3.8m
Price	\$584,000 + GST



3B

ECOLIV®



EcoGeneration^{3B}

Modules	3
Area	148.68m ²
Deck	17.19m ²
Length	24.72m
Width	8.91m
Height	3.8m
Price	\$630,000 + GST



3C

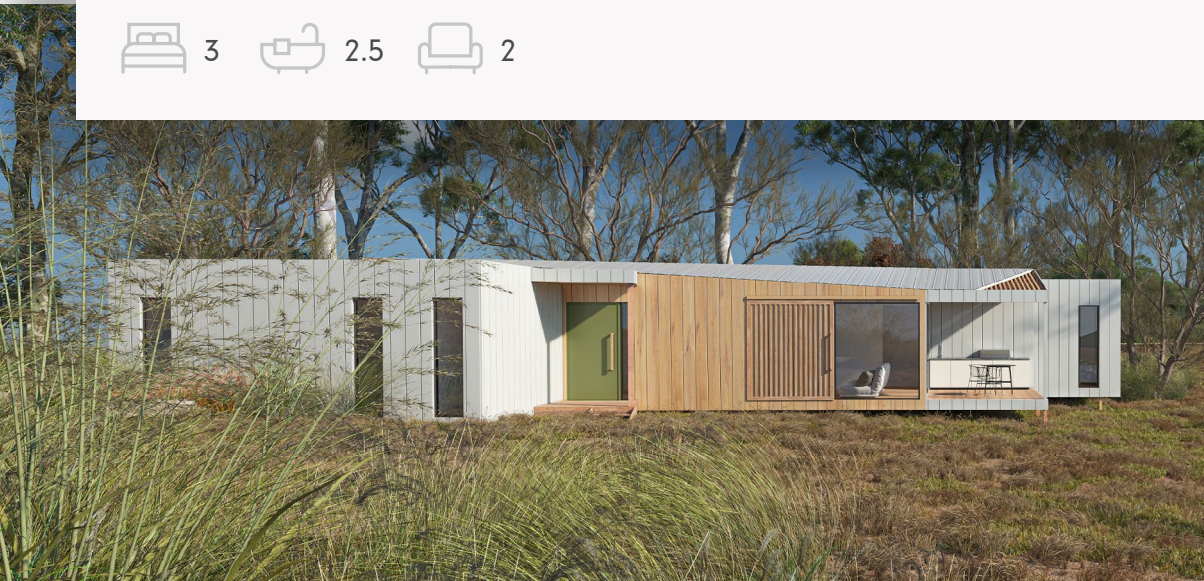
ECOLIV[®]



 3  2.5  2

EcoGeneration^{3C}

Modules	3
Area	156.73m ²
Deck	17.19m ²
Length	21.50m
Width	13.32m
Height	3.8m
Price	\$653,000 + GST



3D

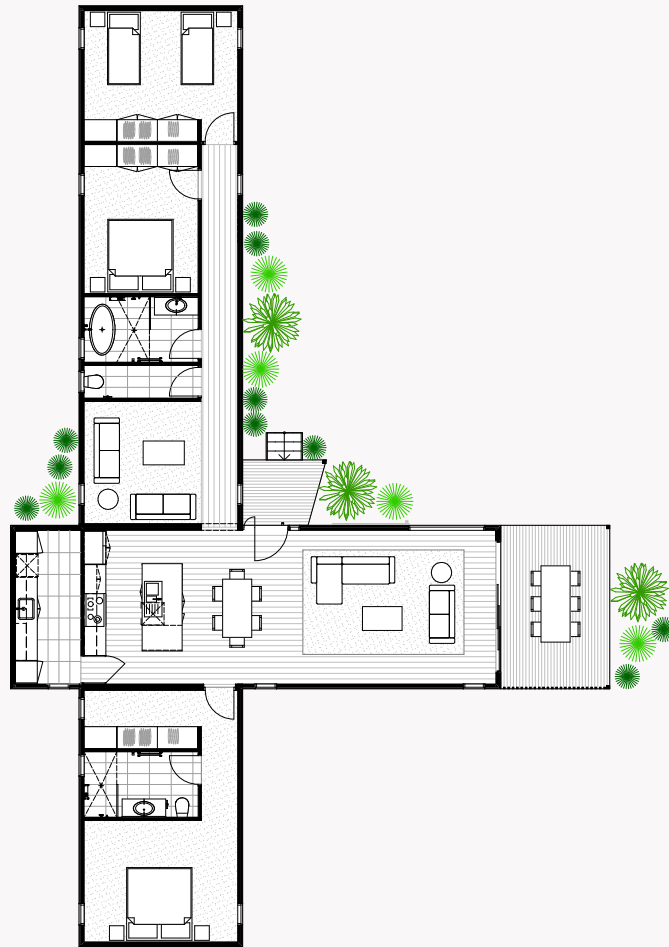


EcoGeneration^{3D}

Modules	3
Area	149.05m ²
Deck	17.19m ²
Length	19.71m
Width	20.91m
Height	3.8m
Price	\$655,000 + GST

3E

ECOLIV®



3 2.5 2

EcoGeneration^{3E}

Modules	3
Area	157.14m ²
Deck	17.19m ²
Length	16.50m
Width	25.92m
Height	3.8m
Price	\$665,000 + GST



3F



EcoGeneration^{3F}

Modules	3
Area	163.08m ²
Deck	17.19m ²
Length	25.95m
Width	8.91m
Height	3.8m
Price	\$689,000 + GST



EcoGeneration

4 Bedroom floor plans

4A



EcoGeneration^{4A}

Modules	3
Area	172.05m ²
Deck	17.19m ²
Length	26m
Width	13.32m
Height	3.8m
Price	\$700,000 + GST

 4
  2.5
  2

4B



EcoGeneration^{4B}

Modules	3
Area	179.28m ²
Deck	17.19m ²
Length	29.55m
Width	8.91m
Height	3.8m
Price	\$721,000 + GST

 4
  2.5
  2

4C



EcoGeneration^{4C}

Modules	3
Area	173.35m ²
Deck	17.19m ²
Length	25.11m
Width	20.91m
Height	3.8m
Price	\$725 ,000 + GST

 4
  2.5
  2

Standard inclusions

ENERGY EFFICIENCY / SUSTAINABILITY

- 5.5 kW grid connect solar power system
- 7 Star energy rating (via site specific passive solar design recommendations)
- 10,000 litre poly water tank connected to dishwasher and toilet
- 250 litre energy efficient heat pump hot water system
- Sealing with Thermakraft vapour permeable membrane
- Zero carbon footprint Weathertex cladding
- Double glazed aluminium windows and sliding doors
- Low VOC paints and sealers
- Low VOC custom cabinetry
- WELS rated plumbing fixtures
- LED downlights
- Bulk insulation - R1.5 Aircell roof blanket, ceiling R6 batts, walls R2.5, floor R6. (subfloor sealed)

SITE & FOUNDATIONS

- Footings (to class 'M' soil classification)
- 600mm diameter bored pier concrete pad with galvanised steel stumps to 400mm high
- Connection of services (electrical, water and wastewater) available from building perimeter
- NCC termite treatment

EXTERIOR

- NCC compliant structure (local, state and national compliance)
- Plantation pine frames and trusses
- Standing seam profile colorbond colour roofing and accessories to living Trimdeck to other modules
- Zero carbon footprint Weathertex cladding
- Australian made Haymes Low VOC paint finish to all external surfaces (one colour)
- AWS 2400mmH powder coated aluminium double-glazed windows and sliding door units
- Fly screens to all openable windows and sliding doors
- Featured timber sliding screen
- 1020 solid core entry door with feature handle
- One garden tap connected to water tank

- BAL (Bushfire Attack Level) 12.5 construction
- Wind rating to N2
- Covered entry pergola
- Australian hardwood decking + external steps as detailed in floorplan

INTERIOR

- 3100mm max ceiling height to living module with timber lined feature ceiling
- 2550mm max ceiling height to all other rooms
- 10mm plasterboard to walls and ceilings
- Insulation to external walls, floors + ceilings
- Eazypine 67mm square set skirting + architraves
- Villaboard (water resistant) to bathroom
- Redicote 2340mm hinged internal doors with brushed chrome lever door furniture
- Cushion door stops to all doors opening onto walls
- 2500mm joinery built-in robes with shelving, hanging rail and study nook to bedrooms
- Bremworth 100% wool carpet to bedrooms
- Tasmanian Oak 14.3mm engineered timber flooring with Bona low VOC scratch resistant finish
- Australian made Haymes low VOC paint finish to all internal surfaces (one colour)

KITCHEN

- 20mm recycled glass benchtops
- Low VOC custom cabinetry
- Fisher & Paykel 90cm 100L 9 Function Electric Oven
- Fisher & Paykel 900mm Induction cooktop
- Fisher & Paykel 900mm Integrated Range Hood
- Single bowl stainless steel sink with drainer
- Phoenix taps WELS rated water saving brushed nickel flick mixer
- Tiled splashback
- Australian hardwood chopping block
- 2 compartment recycling bin system and cutlery tray insert

BATHROOMS

- 20mm recycled glass benchtops
- Low VOC custom cabinetry
- Solid surface basin
- Solid surface bath (design specific)
- LED backlit wall mirror with magnifying panel and clock
- Waterproofing to all tiled areas
- 600x300 ceramic floor and wall tiles to wet areas, full height tiling to 3 walls
- 600x300 ceramic tiled shower base set-in floor
- 1950mm frameless shower screens
- Phoenix taps WELS rated water saving brushed nickel flick mixer
- WELS rated water saving low-level toilet suites

LAUNDRY / PANTRY

- Low VOC custom cabinetry
- Tiled splashback
- Stainless steel insert trough
- Phoenix Taps WELS rated water saving brushed nickel finish sink mixer
- Chrome finish hot and cold tap fittings for washing machine
- 600x300 ceramic floor tile
- In draw laundry hamper

STUDY

- Low VOC custom cabinetry
- Metabox filing draws
- Tech and storage cupboard

ELECTRICAL & SAFETY

- Kitchen 4x GPO, 2x surface mounted downlights, 1x telephone point or 1x data point
- Living/Dining 3x GPO, 4x surface mounted downlights, 1x TV point
- Laundry/Pantry 2x GPO, 1x downlight, 1x exhaust fan
- Bedroom/Rumpus 2x GPO, 1x ceiling fan w/ light
- Study 2x GPO, 1x downlight
- External 2x wall light w/ sensor, 2x external GPO
- Smoke detectors hard wired w/ battery backup
- Energy saving LED globes to all downlights
- Bathroom 1x GPO, 1x exhaust/light/heater, 1x LED backlit mirror

EXCLUSIONS POA

- Excavations of site if required
- Driveway construction
- Transport/Delivery Fees
- Service connections
- Balustrade/handrails

Please note: Secondary dwellings and Extension projects to be connected to existing services.

Live the dream, naturally

Contact us

The EcoHub Display Centre
1114 Bass Hwy, The Gurdies
VIC 3984

Phone +61 (3) 5672 5196
Email info@ecoliv.com.au
Visit ecoliv.com.au

Join our community