



EcoHut range

Exquisite quality meets contemporary and sustainable design in our EcoHut range of luxury accommodation. Offering four exclusive designs, our one and two-bedroom modular cabins are the ideal solution for deluxe tourist accommodation, a dream retreat, a quiet home studio or a functional cabin.

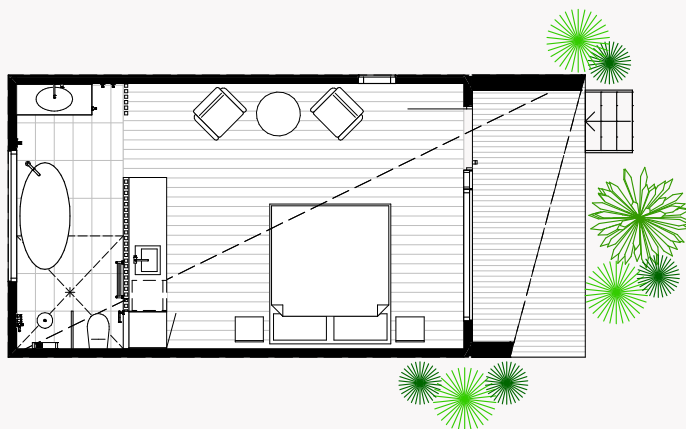
Make your stays sustainable

Perfect for luxury accommodation and eco-friendly retreats, or even a contemporary home studio, our EcoHut range features three exclusive designs of one and two bedroom modular cabins to choose from.

Like all Ecoliv homes, our EcoHut range is designed for living harmoniously with the natural Australian environment. Impress your guests with hallmarks of sophisticated design such as 100 percent wool carpets and Tasmanian oak engineered flooring plus sustainable features like benchtops made from recycled glass bottles and off-grid service capabilities.

Explore our EcoHut designs and floor plans to find the right cabin design for you. Looking for something different? Discover our EcoGeneration, and EcoLiving modular home designs or view our featured custom home builds for a completely tailored approach.

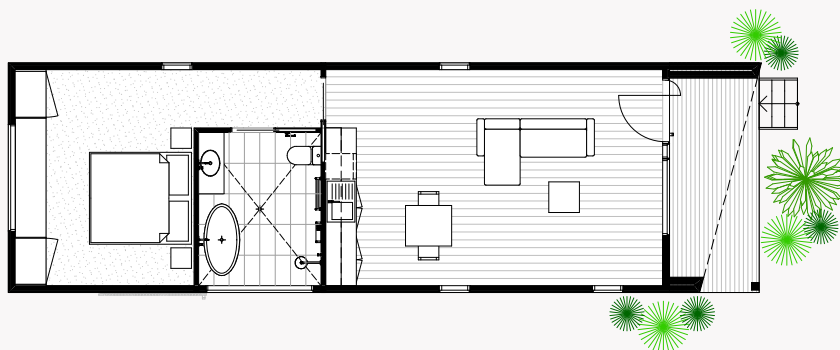
1A



EcoHut 1A

Modules	1
Area	33.88m ²
Deck	7.52m ²
Length	9.20m
Width	4.50m
Height	3.7m
Price	\$240,000 + GST

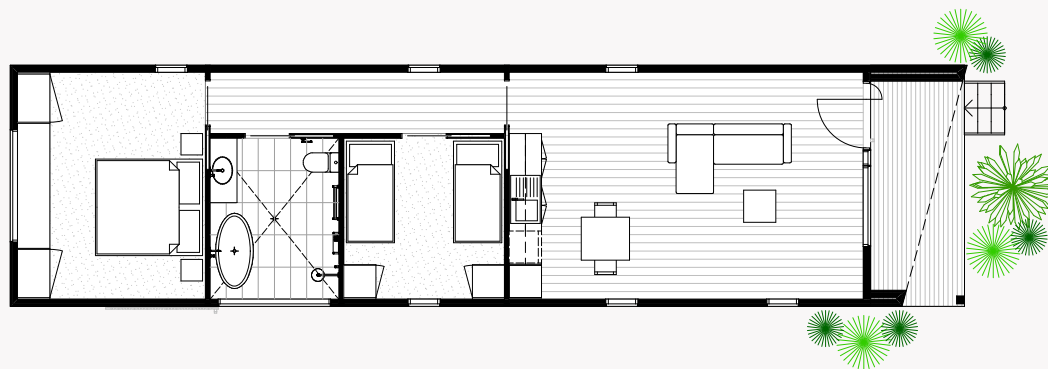
1B



EcoHut^{1B}

Modules	1
Area	58.26m ²
Deck	7.9m ²
Length	14.7m
Width	4.5m
Height	3.7m
Price	\$305,000 + GST

2A



EcoHut^{2A}

Modules	1
Area	72.18m ²
Deck	7.9m ²
Length	17.79m
Width	4.5m
Height	3.7m
Price	\$367,000 + GST

Standard inclusions

ECOLIV®

EcoHut range

ENERGY EFFICIENCY / SUSTAINABILITY

- 7 Star energy rating (via site specific passive solar design recommendations)
- Zero carbon footprint Weathertex cladding
- Sealing with a vapour permeable membrane
- 180 litre heat pump hot water system
- Double glazed argon filled aluminium windows and sliding doors
- Low VOC paints and sealers
- Low VOC custom cabinetry
- WELS rated plumbing fixtures
- LED downlights
- Bulk insulation - R1.5 Aircell roof blanket, ceiling R6 batts, walls R2.5, floor R6. (subfloor sealed)

SITE & FOUNDATIONS

- Footings (to class 'M' soil classification)
- 600mm diameter bored pier concrete pad with galvanised steel stumps to 400mm high
- Connection of services available from perimeter of building
- NCC termite treatment

EXTERIOR

- NCC compliant structure (local, state and national compliance)
- Plantation pine frames and trusses
- Trimdeck profile colorbond colour roofing and accessories
- Zero carbon footprint Weathertex cladding
- Australian made Haymes Low VOC paint finish to all external surfaces (one colour)
- AWS powder coated aluminium double-glazed windows and sliding door units
- Fly screens to all openable windows and sliding doors
- 1020 solid core entry door with feature handle
- Australian hardwood decking + external steps as detailed in floorplan

- BAL (Bushfire Attack Level) 12.5 construction
- Wind rating to N2

INTERIOR

- 3100mm max ceiling height to living with timber lined feature ceiling
- 2550mm max ceiling height to bedrooms and bathrooms
- 10mm plasterboard to walls
- Insulation to external walls, floors and ceilings
- Eazypine 67mm square set skirting and architraves
- Villaboard (water resistant) to bathroom
- Redicote 2400mm hinged internal doors with brushed chrome lever door furniture
- Cushion door stops to all doors opening on to walls
- Built-in robes and feature window seat
- 100% wool carpet to separate bedrooms
- Tasmanian Oak 14.3mm engineered timber flooring with low VOC scratch resistant finish
- Australian made Haymes low VOC paint finish to all internal surfaces (one colour)

KITCHENETTE

- 20mm recycled glass benchtops
- Low VOC custom cabinetry
- Single bowl stainless steel sink
- Phoenix taps WELS rated water saving brushed nickel flick mixer
- Tiled splashback
- 2 compartment recycling bin and cutlery tray insert

BATHROOM

- 20mm recycled glass benchtops
- Low VOC custom cabinetry
- Solid surface basin
- Solid surface bath (design specific)
- 2000mm frameless shower screen
- LED backlit wall mirror with magnifying panel
- Waterproofing to all tiled areas
- 600x300 ceramic floor and wall tiles to wet areas, full height tiling to 3 walls
- 600x300 ceramic tiled shower base set in floor
- Phoenix taps WELS rated water saving brushed nickel flick mixer
- WELS rated water saving toilet suites

ELECTRICAL & SAFETY

- Kitchenette 2x GPO, 2x surface mounted downlights
- Living 1x GPO, 4x surface mounted downlights, 1x TV point or 1x data point
- Bathroom 1x GPO, 1x exhaust fan/light/heater
- Bedroom 3x GPO, 1x ceiling fan with light
- External 1x external wall light with sensor, 1x external GPO
- Smoke detectors hard wired with battery backup
- Energy saving LED to all downlights

EXCLUSIONS POA

- Pre-construction design fees
- Excavations of site if required
- Driveway construction
- Transport/Delivery Fees
- Service connections
- Balustrade/handrails

*Please note: Secondary dwellings, Extension projects and projects under 60m2 do not include solar power systems or water tanks.

ECOLIV[®]

Contact us

The EcoHub Display Centre
1114 Bass Hwy, The Gurdies
VIC 3984

Phone +61 (3) 5672 5196
Email info@ecoliv.com.au
Visit ecoliv.com.au

Join our community

