

ECOLIV[®]

Interiors guide



Inspired by the Australian landscape and lifestyle, our prefab modular homes offer sophisticated design and sustainable living.

Contents

Colour palettes	2
Internal finishes	7
Paint	8
Flooring	9
Carpet	10
Tiles	11
Joinery	12
Benchtops	14
Splashback	15
Appliances	16
Plumbing fixtures	17
Electical fixtures	19
Heating & cooling	20
Door hardware	21
Standard inclusions	22





We believe that modern luxury is living in comfort without compromising the natural environment.

We are inspired by, and aim to protect Australia's natural environment through choosing sustainable building materials to reduce our overall environmental impact.

Which is why we source from companies and trade suppliers who share our values by using sustainable processes and preservation methods to produce ethical products.

Colour palettes



Image: EcoHut 1A

The interior of each Ecoliv home reflects our love of the outdoors and pays homage to the environment.

Our four refined and timeless Ecoliv interior styles are a distillation of oceans, cities, mountains and deserts, complex in light, colour texture and form. They have been curated as an adaptable canvas to reflect your location and lifestyle so it tells the story of who you are and is a reflection of what you love.

Designed for contemporary open-plan environments, our signature style is both flexible and durable. Its timeless design serves as the perfect canvas for you to express your unique personality.

We are committed to creating interior spaces that feature materials from sustainable sources or recycled content from companies that focus on responsible production practices. Sustainability is ingrained within every fabric of your Ecoliv home so you can invest in the best and treasure it forever.

Coastal Calm



Lightness, soft tones and a fresh aesthetic evokes the cool breeziness of the coast.



Riverine Tranquility



Neutral tones, encapsulate the peaceful essence of riverside landscapes.

Alpine Serene



Warmth, organic elements and raw appeal conjure an inherent connection to the rugged alpine landscape.

Urban Zen



Dusky shadows imbue a sleekness, sophistication and seductive allure of the urban jungle.

Internal finishes



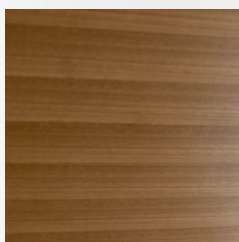
Image: EcoHut 1A

Designer ply

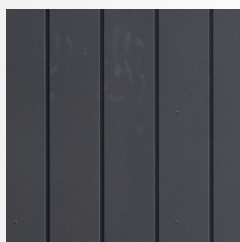
Natural Tasmanian Oak timber veneer is pressed on Premium Birch Plywood. The multiple layers of 1.3 - 1.4mm Birch veneer provide a beautiful, functional core that's complemented with a beautiful Oak veneer pressed onto both sides. The detailed grain combined with the Premium Birch Plywood edge makes this product suitable for a range of aesthetic applications including furniture, wall panelling, ceiling lining, DIY projects.

MDF wall panelling

Add character and complement any design from country homestead to coastal haven. Effortlessly achieve the look with Easy Craft's MDF panelling.



Birch Ply Rotary Sawn
Tas oak



Easycraft 150 MDF
primed lining
3000x1200x9

Paint



Image: Ecohut 1A

Haymes Paint

Haymes is passionate about Australia, its people and its environment. They are proud to be one of the last remaining family businesses and to be able to contribute to creating hundreds of jobs in our country. They are committed to the minimising of our carbon footprint, the adoption of best practices in environmental management and in producing paint that is low in volatile odour compound (VOC).



Walls & ceilings
Minimalist Flat Finish NG12



Woodwork & doors
Minimalist Semi Gloss NG12

Flooring



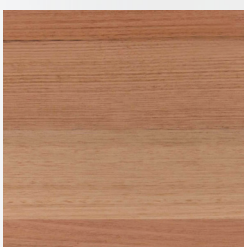
Image: Parmate

Parmate engineered Australian timber flooring

Parmate single strip wide board range features Australian species such as Tasmanian Oak. The top layer is a 3.5mm solid hardwood, finished with six coats of scratch resistant UV cured finish from Bona AB for maximum durability. The middle and bottom layers are plantation grown timber from managed forests that give a total thickness of 14mm.

All Parmate flooring is produced from materials sourced from sustainably managed forests. Parmate products are PEFC and FSC certified. All Australian species timber used have Chain of Custody certification.

All Parmate flooring complies with the requirements of the European Union E1 standard in relation to Formaldehyde emissions from adhesives used during the manufacturing process.



Tas oak
Engineered timber

Carpet



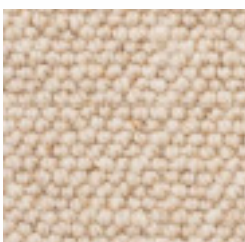
Image: Bremworth Wool Carpets

Bremworth Wool Carpets

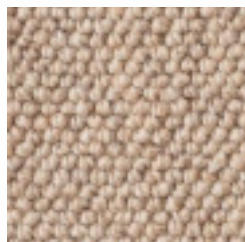
Bremworth Wool Carpets, an exclusive line of premium carpets, is crafted from 100% New Zealand wool, is biodegradable, renewable and celebrated for its quality and resilience. These carpets offer lasting comfort, stain resistance, and ease of maintenance.

With over 60 years of experience, Bremworth have shifted focus from synthetic carpets to wool and in May 2021 saw their last ever synthetic carpet production.

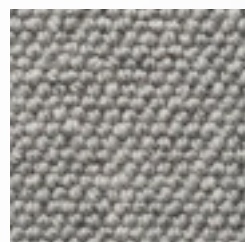
Ecoliv supports their commitment to sustainability, championing the creation of products exclusively from naturally sourced materials in their journey toward circularity.



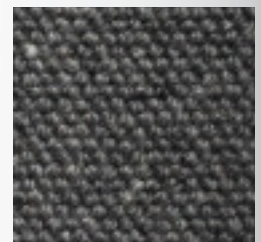
Parchment



Simoon



Felucca



Horizon

Tiles



Image: Ecoliv, Flinders project

Beaumont Tiles

Beaumont Tiles have been transforming Australian homes for over 60 years with gorgeous designs and stunning products from around the globe. They pride themselves in delivering specialist advice and a promise of the absolute best value and quality guarantees provide peace of mind.

We have made the selection process stress-free and curated a range of tile options to suit our design sensibilities as well as your personal style.



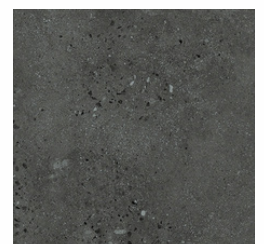
1235770 Rome Light Grey
GL - Pore Microtec Text



1215002 Rome Greige
GL - Pore Microtec Text



1235772 Rome Cement Dark
Grey GL-Porc Text



1235774 Rome Cement
Shadow, GL-Porc Text

Tile size: 300 x 600

Joinery



Image: Laminex Australia

Laminex

The Laminex Group offers an extensive range of environmentally-preferable surface solutions that meet or, in many cases, exceed industry standards.

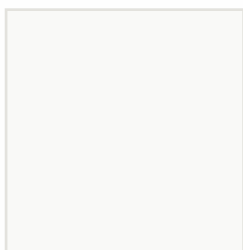
A member of the Green Building Council of Australia with a growing team of GBCA accredited professionals, The Laminex Group has Green Star® rated projects through the following:

Low emission products – low formaldehyde (E0, Super E0 and No Added Formaldehyde) and low Volatile Organic Compound (VOC).

Timber certifications - Forest Steward Council® (FSC®) Chain of Custody (CoC), Australian Forestry Standard/Programme for the Endorsement of Forest Certification Schemes (AFS/PEFC) certified sites and products.

The Laminex Group also maintains an ISO 14001 certification for most sites and is progressively embarking on a number of waste and emission reduction initiatives to reduce our overall environmental impact.

Coastal Calm



Polar White 200
AbsoluteMatte Finish

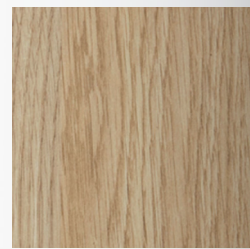


Impressions Polar White 205
Nuance Finish

Riverine Tranquility



Surf 7923
AbsoluteMatte Finish

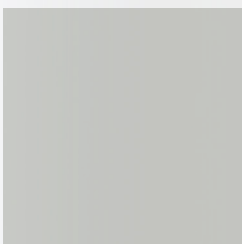


Impressions Classic Oak
Nuance Finish

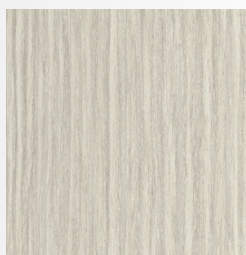


Image: Laminex Australia

Alpine Serene

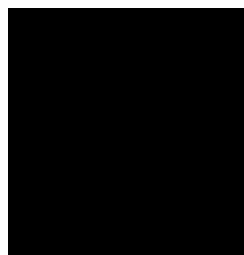


Oyster Grey 327
AbsoluteMatte Finish



Impressions Alaskan 334
Nuance Finish

Urban Zen



Black 460
AbsoluteMatte Finish



Impressions Black 460
Nuance Finish

Benchtops



Image: Betta Stone

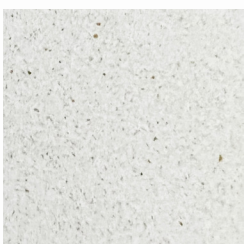
Eco Benchtops

Eco Benchtops is a locally Australian owned company based in Melbourne that is leading the way in the circular economy across Australia. By using waste glass that is destined for landfill or storage and repurposing it, Eco Benchtops is tying off the loose ends of Australia's recycling industry all while stimulating the economy.

Currently, the 1.36 million tonnes of glass waste produced each year is piling up in warehouses and landfills across Australia. Eco Benchtops is taking these stagnant resources and converting them into high-quality sustainable building materials for kitchens, restaurants, cafes and office spaces.

With around 35% of all recycling waste being glass, there is a major supply of otherwise wasted resources that Eco Benchtops has identified and now utilised. Eco Benchtops products can be reused and reprocessed which creates an innovative loop system for glass to re-circulate through development and economy.

By engineering high-end sustainable products from otherwise wasted material Eco Benchtops is changing the way "waste" is perceived across Australia.



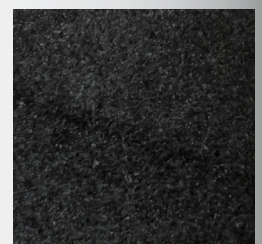
Whitsunday



Sandstone Ridge



Tasman Thunder



Southern Night

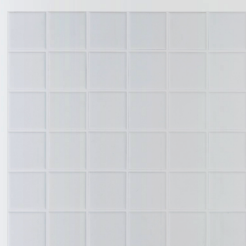
Splashback



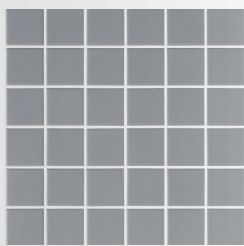
Image: EcoHut 1A

Beaumont Tiles

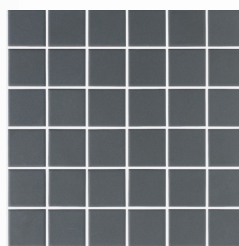
To simplify your selection process, we have curated a small range of splashback tile options from Beaumont Tiles. These options align with our refined design sensibilities and colour palettes, as well as your unique personal style, ensuring you find the perfect splashback for your space.



48 x 48
Regency GL-Porc Text
White



48 x 48
Helsinki Fullbody
Matt Grey



48 x 48
Regency GL-Porc Text
Black

Appliances



Image: Fisher & Paykel

Fisher & Paykel

In a rapidly changing world, Fisher & Paykel takes the responsibility to significantly lessen their impact seriously.

Dedication to sustainability is deeply ingrained in their approach, influencing their work, product design, packaging, and delivery methods.

Their luxury appliances epitomise elegance and functionality, seamlessly fusing style with performance.

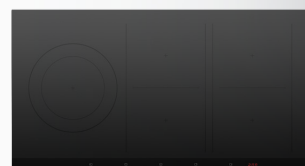
Fisher & Paykel's commitment to crafting exceptional products aligns perfectly with our values, placing sustainability and environmental consciousness at the forefront.



Fisher & Paykel 90cm 100L 9 Function Electric Oven



Fisher & Paykel 90cm Integrated Range Hood



Fisher & Paykel 90cm 5 Zone Induction Cooktop



Fisher & Paykel Freestanding French Door Refrigerator Freezer, 79cm, 487L, Ice & Water



Fisher & Paykel Integrated Dishwasher, Sanitise, Customisable



Fisher & Paykel Combi Front Loader Washer Dryer, 8.5kg + 5kg

FISHER & PAYKEL

Kitchen fixtures



Image: Phoenix Tapware

Phoenix tapware

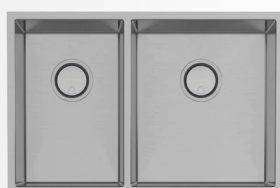
Ecoliv selects quality fittings that are not only durable, affordable, and functional, but also feature a high WELS rating to ensure water savings. WELS is Australia's Water Efficiency Labelling Scheme that requires certain products to be registered and labelled with their water efficiency in accordance with the standard set under the national Water Efficiency Labelling and Standards Act 2005. By choosing to use more water-efficient products in the home, Australians will save water and reduce their water and energy bills.

Tapware, showerheads and toilets all have different maximum ratings. Tapware can be a maximum of 6-stars, toilets can be a maximum of 5-stars and showerheads can be a maximum of 3-stars.



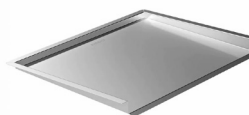
Phoenix Vivid Slimline
Pull Out Sink Mixer
WELS rating 5 star - 5lt/min

● **Brushed Nickel**



Phoenix 4000 Series 1 and 3/4
Right Hand Bowl Sink

● **Stainless steel**



Phoenix Benchtop Drainer
Tray Stainless Steel

● **Stainless steel**



Phoenix Wire Basket

● **Chrome**

Bathroom fixtures



Image: EcoHut 1A



Oslo Rimless Wall Faced Toilet Suite w/Geberit Chrome Round Push Plate. WELS rating 4 star

○ White ● Brushed Nickel



Phoenix Vivid Slimline Wall/Bath Mixer Set 230mm Curved. WELS rating 5 star

● Brushed Nickel



Fienza Nero 1400mm Freestanding Matte White

○ White



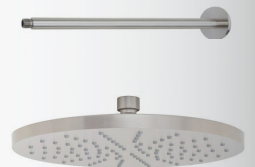
Nero Solid Basin

○ White



Phoenix Vivid Slimline Wall Shower System WELS rating 3 star

● Brushed Nickel



Phoenix Vivid Ceiling Arm 300mm.

Phoenix Vivid Shower 230mm Round. WELS rating 5 star

● Brushed Nickel

Electrical fixtures



Image: EcoGeneration range

LED lights

LED stands for 'Light Emitting Diode', a semiconductor device that converts electricity into light. LED lights are the latest technology in energy efficient lighting and are a standard feature in all Ecoliv homes. LED lights are super energy efficient, using approximately 85% less energy than halogen or incandescent lighting – meaning significant savings on your power bills. LED lights also have a much longer lifespan than other types of lighting.

Ceiling fans

Ceiling fans effectively circulate the air in a room and facilitate cross flow ventilation to improve comfort year round. The SURF DC ceiling fan has both designer looks and high performance output. Suitable for indoor and outdoor installation under covered areas.



Havit Nella 12W LED Downlight



Rex 10w LED Downlight



Marshall LED Exterior Wall Light



20549901 Surf LED 52" 132cm



Heating & Cooling



Image: Nectre

Nectre

Nectre's reputation has been built on decades of experience listening to customers and perfecting their fireplaces. Designed and made for Australian conditions, their heaters are easy to maintain to stand the test of time. With a Nectre fireplace, you're also choosing reliability and quality. Crafted in South Australia since 1978, the Nectre N60 is easily a crowd favourite with its tall, sleek, award-winning design, best suited to larger homes.

Panasonic

Panasonic has been in the air conditioning business for over 50 years, with products supplied for industrial, commercial and residential applications.

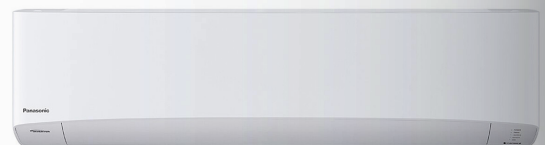
By combining their Inverter technology with their exclusive ECONAVI sensor technology, they have developed a powerhouse energy saving product, allowing you to make a green choice, while still living comfortably. Panasonic products also include anti-bacterial filters, making sure the air you breathe is clean and healthy.



Nectre N60
Best suited to larger homes.



Nectre Form 2
Best suited to small homes or secondary dwellings.



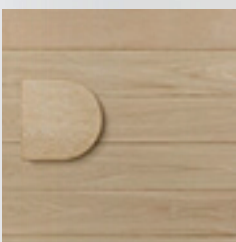
Panasonic reverse cycle inverter condenser ground/wall mounted. Options, 2.5 kw cooling /3.2Kw heating, 3.5 kw cooling /3.7 Kw heating, 5 kw cooling /6 Kw heating

Door hardware

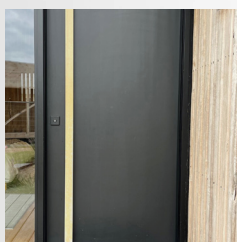


Image: Ecoliv, Flinders project

Ecoliv has curated a premium range of entry door handles and locks to enhance the entryway of your property. Elevate your entrance with our stylish and secure selections, perfect for adding both functionality and aesthetic appeal to your home.



Corinthian Doors D-form pad handle 300mm ELM H5B



HIRA door pull handle rectangular SDH004 60x42mm 1950mm Tas Oak



Lockwood Paradigm 005 square deadbolt double cylinder Matt Black 005/ B2MBK Exterior View



G2 Series Angular Passage Leverset Round Backplate



Standard inclusions

(EcoGeneration range & EcoHut range)

ENERGY EFFICIENCY / SUSTAINABILITY

- Operationally carbon neutral
- 5.5 kW grid connect solar power system*
- 7 Star energy rating (via site specific passive solar design recommendations)
- 10,000 litre poly water tank connected to dishwasher and toilet*
- 250 litre energy efficient heat pump hot water system
- Sealing with Thermakraft vapour permeable membrane
- Zero carbon footprint Weathertex cladding
- Double glazed aluminium windows and sliding doors
- Low VOC paints and sealers
- Low VOC custom cabinetry
- WELS rated plumbing fixtures
- LED downlights
- Bulk insulation - ceiling R6 batts, walls R2.5, floor R6. (subfloor sealed)

SITE & FOUNDATIONS

- Footings (to class 'M' soil classification)
- 600mm diameter bored pier concrete pad with galvanised steel stumps to 400mm high
- Connection of services (electrical, water and wastewater) available from building perimeter
- NCC termite treatment

EXTERIOR

- NCC compliant structure (local, state and national compliance)
- Plantation pine frames and trusses
- Standing seam profile colorbond colour roofing and accessories
- Zero carbon footprint Weathertex cladding
- Australian made Haymes Low VOC paint finish to all external surfaces (one colour)
- AWS powder coated aluminium double-glazed windows and sliding door units
- Fly screens to all openable windows and sliding doors
- Timber sliding screen
- 1020 solid core entry door with feature handle
- One garden tap connected to water tank
- BAL (Bushfire Attack Level) 12.5 construction
- Wind rating to N2
- Covered entry pergola
- Australian hardwood decking + external steps as detailed in floorplan

INTERIOR

- 3100mm max ceiling height to living module timber lined feature ceiling
- 2550mm max ceiling height to all other rooms
- 10mm plasterboard to walls and ceilings
- Insulation to external walls, floors + ceilings
- Eazypine 67mm square set skirting + architraves
- Villaboard (water resistant) to bathroom
- Redicote 2340mm hinged internal doors with brushed chrome lever door furniture
- Cushion door stops to all doors opening onto walls
- 2500mm built-in robes with shelving, hanging rail and study nook to bedrooms
- 100% wool carpet to bedrooms
- Tasmanian Oak 14.3mm engineered timber flooring with Bona low VOC scratch resistant finish
- Australian made Haymes low VOC paint finish to all internal surfaces (one colour)

KITCHEN

- 20mm recycled glass benchtops
- Low VOC custom cabinetry
- Fisher & Paykel 900mm stainless steel under bench electric oven
- Fisher & Paykel 900mm ceramic electric cooktop
- Fisher & Paykel 900mm undermount range hood (externally ducted)
- 1 3/4 bowl stainless steel sink with drainer
- Phoenix taps WELS rated water saving brushed nickel flick mixer
- Tiled splashback
- Australian hardwood chopping block
- 2 compartment recycling bin system and cutlery tray insert

BATHROOMS

- 20mm recycled glass benchtops
- Low VOC custom cabinetry
- Solid surface basin
- Solid surface bath (design specific)
- LED backlit wall mirror with magnifying panel and clock
- Waterproofing to all tiled areas
- 600x300 ceramic floor and wall tiles to wet areas full height to shower walls
- 600x300 ceramic tiled shower base set-in floor
- 1950mm frameless shower screens
- Phoenix taps WELS rated water saving brushed nickel flick mixer
- WELS rated water saving low-level toilet suites

LAUNDRY / PANTRY

- Low VOC custom cabinetry
- Tiled splashback
- Stainless steel insert trough
- Phoenix Taps WELS rated water saving brushed nickel finish sink mixer
- Chrome finish hot and cold tap fittings for washing machine
- 600x300 ceramic floor tile
- In draw laundry hamper

STUDY

- Low VOC custom cabinetry
- Metabox filing draws
- Tech and storage cupboard

ELECTRICAL & SAFETY

- Kitchen 4x GPO, 2x surface mounted downlights, 1x telephone point or 1x data point
- Living/Dining 3x GPO, 4x surface mounted downlights, 1x TV point
- Laundry/Pantry 2x GPO, 1x downlight, 1x exhaust fan
- Bedroom/Rumpus 2x GPO, 1x ceiling fan w/ light
- Study 2x GPO, 1x downlight
- External 2x wall light w/ sensor, 2x external GPO
- Smoke detectors hard wired w/ battery backup
- Energy saving LED globes to all downlights
- Bathroom 1x GPO, 1x exhaust/light/heater, 1x LED backlit mirror

EXCLUSIONS POA

- Excavations of site if required
- Driveway construction
- Transport/Delivery Fees
- Service connections
- Balustrade/handrails

*Please note: Secondary dwellings and Extension projects to be connected to existing services.

All modular homes

PEACE OF MIND

- 7-year Home owners warranty insurance
- 3-month Ecoliv rectification/maintenance

EXCLUSIONS POA

- Excavation of site if required
- Driveway construction
- Transport/Delivery Fees
- Service connections
- Balustrade/handrails

PRE-CONSTRUCTION STAGE

The following items are NOT included in construction costs. Pricing for the Pre-Construction Stage items are site and project dependent.

- Pre-construction design and documentation
- Town planning/Development approval and Building permit documentation
- Town planning/Development approval and Building permit application fees
- Soil test fees
- Energy rating fees
- Bushfire attack level assessment fees
- Engineering drawings and specification fees
- Site re-survey fees
- External consultant reporting fees

Please note: Ecoliv Standard Construction Inclusions and Materials Specifications are subject to availability at the time of construction and can vary for individual sites. These Standard Construction Inclusions are valid for a 3-month period from the date of engagement for Pre-Construction Stage and are subject to change pending supplier availability.



Image: Ecoliv, Orange project



Contact us

The EcoHub Display Centre
1114 Bass Hwy, The Gurdies
VIC 3984

Phone +61 (3) 5672 5196
Email info@ecoliv.com.au
Visit ecoliv.com.au

Join our community

