



Secondary dwellings



Awarded Best Secondary Dwelling/Granny Flat - EcoHut

Secondary dwellings

Featuring five efficient and versatile floorplans, our Secondary dwellings redefine compact and stylish living, offering tailored solutions for those seeking a modern, sustainable, and space-efficient lifestyle.

Stylish and compact future

With a selection of standard floorplans under 60m², our self-contained living spaces, offer a multitude of advantages.

They provide flexibility for upsizing or downsizing as life circumstances evolve, promote intergenerational living by bringing younger and older generations together, offer affordable housing solutions for those otherwise priced out of the market, and create opportunities for generating additional income through short-term rentals.

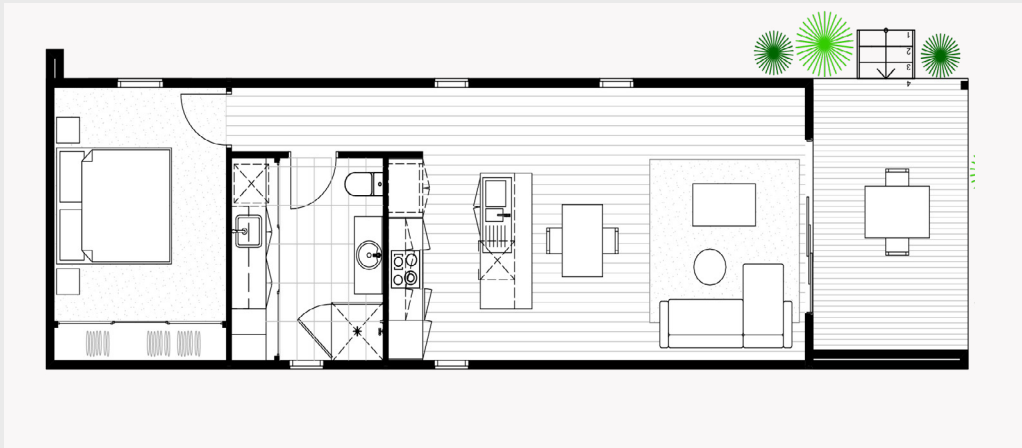
Climate responsive and operationally energy efficient, Ecoliv homes harness the natural environment to provide a healthy, safe, and comfortable living environment for all generations. Crafted with precision from responsibly sourced, renewable, and resilient building materials each home addresses the needs of the present without compromising the future.



ECOLIV[®]

EcoLiving^{1A}

Modules	1
Area	60m ²
Deck	12.15m ²
Length	16.05m
Width	4.5m
Height	3.4m
Price	\$260,000 + GST

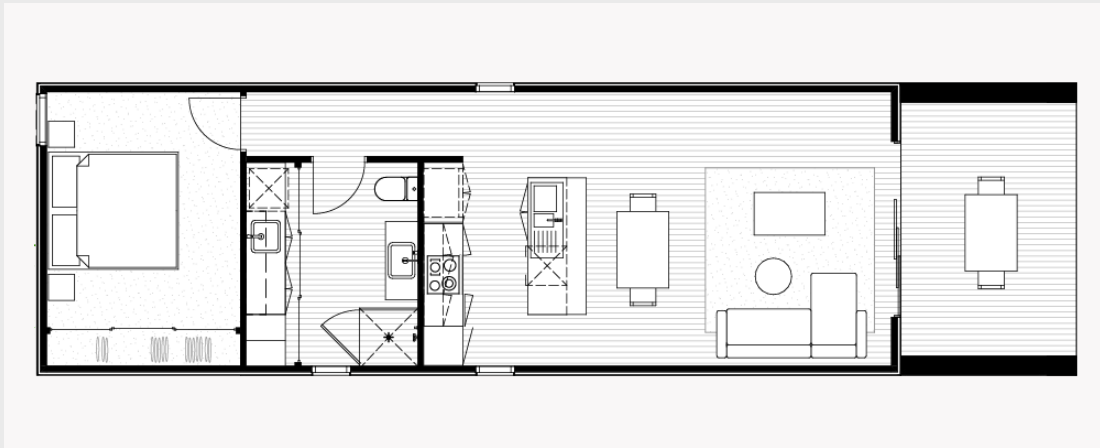




ECOLIV[®]

EcoSancturay^{1A}

Modules	1
Area	60m ²
Deck	11.65m ²
Length	16m
Width	4.5m
Height	3.8m
Price	\$268,000 + GST

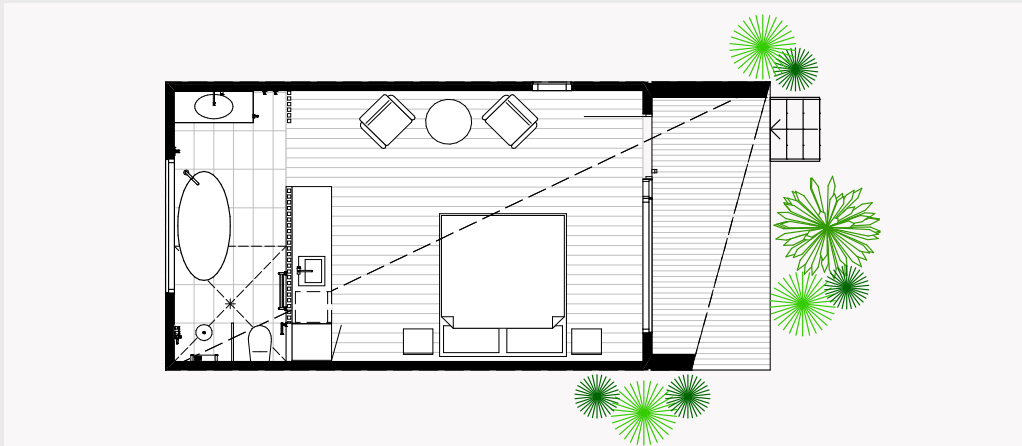




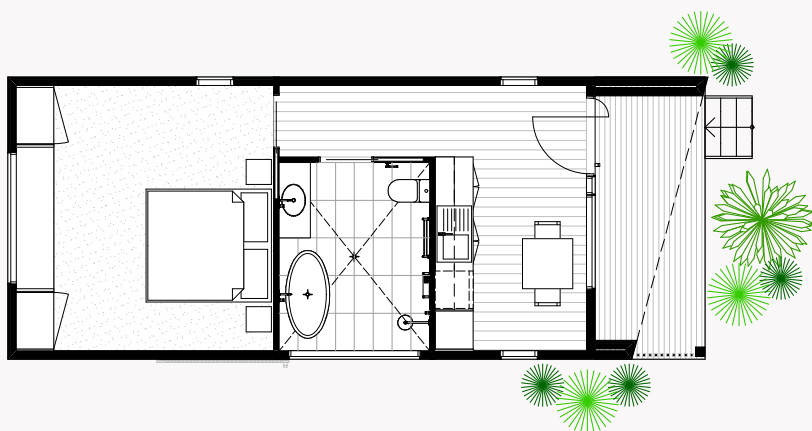
ECOLIV[®]

EcoHut^{1A}

Modules	1
Area	33.88m ²
Deck	7.52m ²
Length	9.20m
Width	4.50m
Height	3.7m
Price	\$218,000 + GST



1B

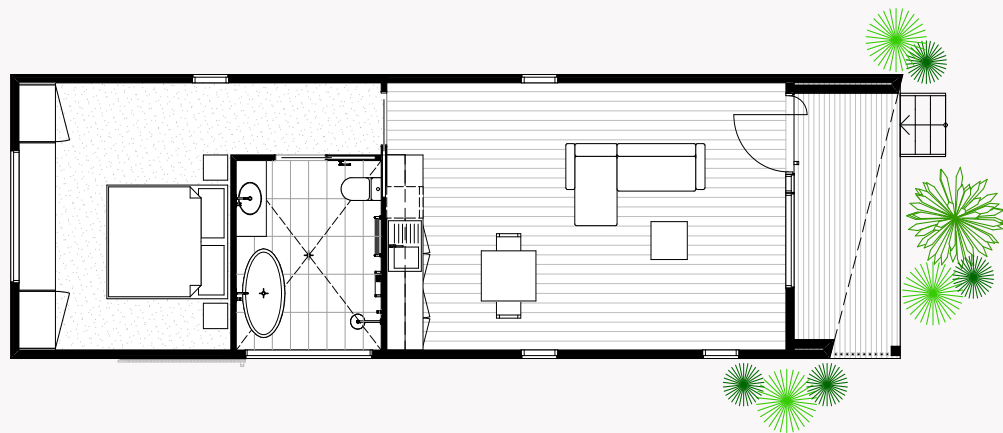


EcoHut^{1B}

Modules	1
Area	42.12m ²
Deck	7.9m ²
Length	11.16m
Width	4.5m
Height	3.7m
Price	\$248,000 + GST



1C



EcoHut^{1C}

Modules	1
Area	58.26m ²
Deck	7.9m ²
Length	14.7m
Width	4.5m
Height	3.7m
Price	\$281,000 + GST



Standard inclusions

ENERGY EFFICIENCY / SUSTAINABILITY

- 7 Star energy rating (via site specific passive solar design recommendations)
- 250 litre energy efficient hot water system
- Sealing with Thermacraft vapour permeable membrane
- Zero carbon footprint cladding
- Double glazed argon filled aluminium windows and sliding doors
- Low VOC paints and sealers
- Low VOC custom cabinetry
- WELS rated plumbing fixtures
- LED downlights
- Bulk insulation - ceiling R6 batts, walls R2.5, floor R60 (subfloor sealed)

SITE & FOUNDATIONS

- Footings (to class 'M' soil classification)
- 600mm diameter bored pier concrete pad with galvanised steel stumps to 400mm high
- Connection of services available from perimeter of building
- NCC termite treatment

EXTERIOR

- NCC compliant structure (local, state and national compliance)
- 820 solidcore entry door with feature handle
- Plantation pine frames and trusses
- Trim Deck profile colorbond colour roofing and accessories
- Zero carbon footprint Weathertex cladding
- Australian made Haymes Low VOC paint finish to all external surfaces (one colour)
- AWS powder coated aluminium double-glazed argon filled windows and sliding door units
- Fly screens to all openable windows and sliding doors

- One garden tap connected to water tank
- BAL (Bushfire Attack Level) 12.5 construction
- Australian hardwood decking + external steps
- Wind rating to N2

INTERIOR

- 2550mm ceiling height throughout
- 10mm plasterboard to walls and ceilings
- Insulation to external walls, floors and ceilings
- Eazypine 67mm square set skirting and architraves
- Villaboard (water resistant) to bathroom
- Redicote 2100mm hinged internal doors with brushed chrome lever door furniture
- Cushion door stops to all doors opening on to walls
- 2500mm built-in robes with shelving and hanging rails
- Wool carpet to bedrooms
- Tasmanian Oak 14.3mm engineered timber flooring with Bona low VOC scratch resistant finish
- Australian made Haymes low VOC paint finish to all internal surfaces (one colour)

KITCHEN

- 20mm recycled glass benchtops with waterfall edge to island
- Low VOC custom cabinetry
- Westinghouse 600mm stainless steel under bench electric oven
- Westinghouse 600mm ceramic electric cooktop
- Westinghouse 600mm under mount range hood (externally ducted)
- 1 3/4 bowl stainless steel sink with drainer
- Phoenix taps WELS rated water saving chrome flick mixer
- Tiled splashback

LAUNDRY

- Low VOC custom cabinetry and tiled splashback
- Stainless steel insert trough
- Phoenix taps WELS rated water saving chrome flick mixer
- Tiled splashback
- Chrome finish hot and cold tap fittings for washing machine
- 600x300 ceramic floor tile

BATHROOM

- 20mm recycled glass benchtops
- Low VOC custom cabinetry
- White vitreous china basin
- 900x1200 fixed wall mirror
- Waterproofing to all tiled areas
- 600x300 ceramic floor and wall tiles to wet areas 2550mm high to shower walls
- 600x300 ceramic tiled shower base set-in floor
- 1950mm semi-frameless shower screens with pivot door
- Phoenix taps WELS rated water saving chrome finish plumbing fixtures + fittings
- WELS rated water saving low-level toilet suites

ELECTRICAL & SAFETY

- Kitchen 4x GPO, 3x downlights, 1x telephone point or 1x data point
- Living/Dining 3x GPO, 3x downlights, 1x TV point
- Bathroom/Laundry/Utility 2x GPO, 1x downlight, 1x exhaust fan
- Bedroom/Rumpus 2x GPO, 1x ceiling fan w/ light
- External 1x single flood light with sensor, 2x external GPO
- Smoke detectors hard wired with battery backup
- Energy saving LED globes to all downlights

PANTRY

- Low VOC custom cabinetry + tiled splashback
- 600x300 ceramic floor tile

EXCLUSIONS POA

- Excavations of site if required
- Driveway construction
- Transport/Delivery Fees
- Service connections
- Balustrade/handrails

Please note: Secondary dwellings and Extension projects to be connected to existing services.

Standard inclusions

ENERGY EFFICIENCY / SUSTAINABILITY

- 7 Star energy rating (via site specific passive solar design recommendations)
- Zero carbon footprint Weathertex cladding
- Sealing with Thermakraft vapour permeable membrane
- Energy efficient hot water system
- Double glazed argon filled aluminium windows and sliding doors
- Low VOC paints and sealers
- Low VOC custom cabinetry
- WELS rated plumbing fixtures
- LED downlights
- Bulk insulation - ceiling R6 batts, walls R2.5, floor R6. (subfloor sealed)

SITE & FOUNDATIONS

- Footings (to class 'M' soil classification)
- 600mm diameter bored pier concrete pad with galvanised steel stumps to 400mm high
- Connection of services available from perimeter of building
- NCC termite treatment

EXTERIOR

- NCC compliant structure (local, state and national compliance)
- Plantation pine frames and trusses
- Standing seam profile colorbond colour roofing and accessories
- Zero carbon footprint Weathertex cladding
- Australian made Haymes Low VOC paint finish to all external surfaces (one colour)
- AWS powder coated aluminium double-glazed windows and sliding door units
- Fly screens to all openable windows and sliding doors

- 1020 soild core entry door with feature handle
- Australian hardwood decking + external steps as detailed in floorplan
- BAL (Bushfire Attack Level) 12.5 construction
- Wind rating to N2

INTERIOR

- 3100mm max ceiling height timber lined
- 10mm plasterboard to walls
- Insulation to external walls, floors and ceilings
- Eazypine 67mm square set skirting and architraves
- Villaboard (water resistant) to bathroom
- Redicote 2400mm hinged internal doors with brushed chrome lever door furniture
- Cushion door stops to all doors opening on to walls
- Built-in robes and window seat
- 100% wool carpet to bedrooms
- Tasmanian Oak 14.3mm engineered timber flooring with Bona low VOC scratch resistant finish
- Australian made Haymes low VOC paint finish to all internal surfaces (one colour)

KITCHENETTE

- 20mm recycled glass benchtops
- Low VOC custom cabinetry
- Single bowl stainless steel sink
- Phoenix taps WELS rated water saving brushed nickel flick mixer
- Tiled splashback
- 2 compartment recycling bin and cutlery tray insert

BATHROOM

- 20mm recycled glass benchtops
- Low VOC custom cabinetry
- White solid surface basin and bath
- LED backlit wall mirror with magnifying panel
- Waterproofing to all tiled areas
- 600x300 ceramic floor and wall tiles to wet areas full hight to shower walls
- 600x300 ceramic tiled shower base set in floor
- Phoenix taps WELS rated water saving brushed nickel flick mixer
- WELS rated water saving low-level toilet suites

ELECTRICAL & SAFETY

- Kitchenette 2x GPO, 2x surface mounted downlights
- Living 1x GPO, 4x surface mounted downlights, 1x TV point 1x telephone point or 1x data point
- Bathroom 1x GPO, 1x exhaust fan/light/heater
- Bedroom 3x GPO, 1x ceiling fan with light
- External 1x external wall light with sensor, 1x external GPO, 1x Marshall LED Exterior Wall Light.
- Smoke detectors hard wired w/ battery backup
- Energy saving LED globes to all downlights

EXCLUSIONS POA

- Excavations of site if required
- Driveway construction
- Transport/Delivery Fees
- Service connections
- Balustrade/handrails

Please note: Secondary dwellings and Extension projects to be connected to existing services.

ECOLIV[®]

Eco modular homes

Live the dream, naturally

Contact us

The EcoHub Display Centre
1114 Bass Hwy, The Gurdies
VIC 3984

Phone +61 (3) 5672 5196
Email info@ecoliv.com.au
Visit ecoliv.com.au

Join our community

